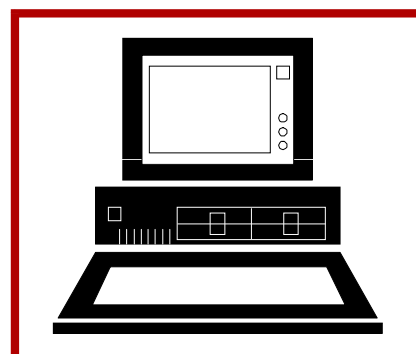
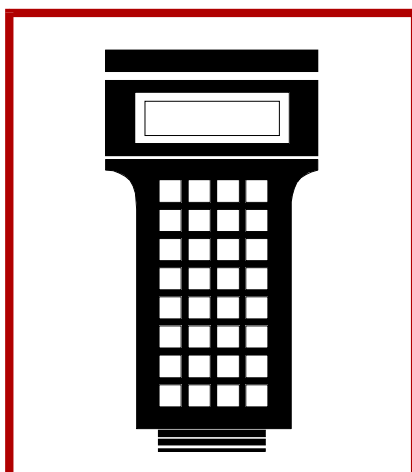
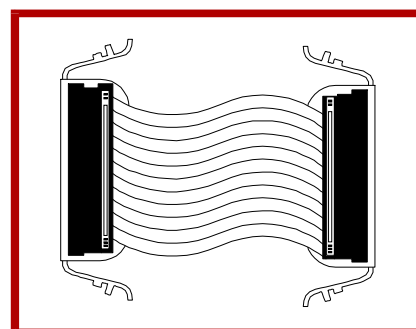
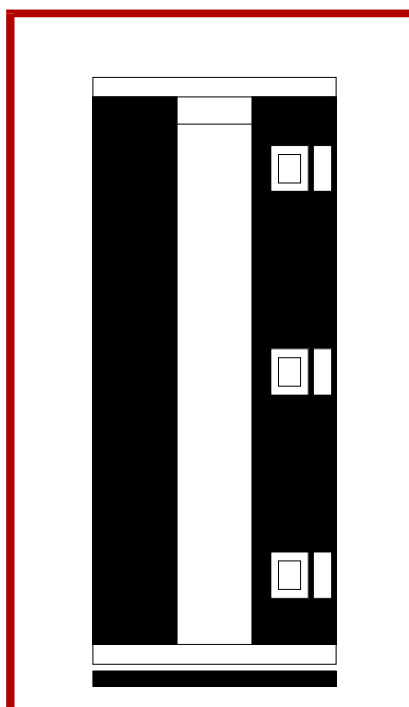
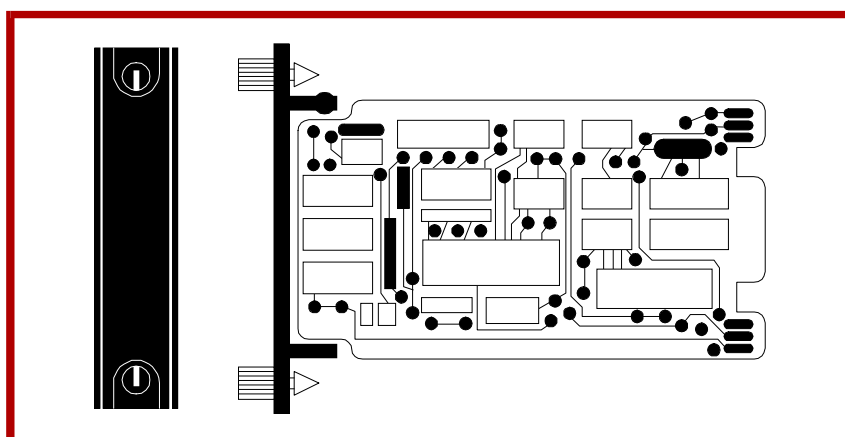
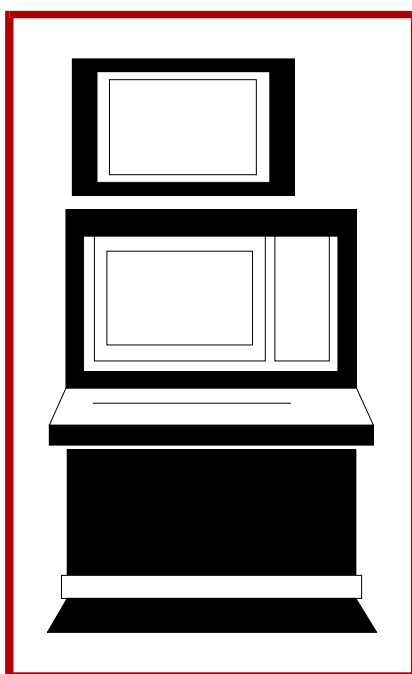




IMAS011

Instruction

Analog Output Module



SPECIFICATIONS

Table 1-5 lists the IMASO11 analog output module specifications.

Table 1-5. Specifications

Property	Characteristic/Value																							
Analog outputs	14, 1 to 5 VDC and 4-20 mA																							
D/A resolution	10 bits for analog outputs																							
Output accuracy	≤0.15% (voltage mode) ≤0.25% (current mode)																							
Output load	750 ohms maximum (current mode) 22 kilohms minimum (voltage mode)																							
Overvoltage category	III for outputs per ANSI/ISA S82.01-1994																							
Current limiting																								
Short circuit protection	50 mA (nominal) output current limit																							
Power requirements																								
Voltage	+5 VDC ±5% +15 VDC ±5% -15 VDC ±5% +24 VDC ±10% (from termination unit/termination module)																							
Current consumption (typical)	250 mA (+5 VDC) 100 mA (+15 VDC) 90 mA (-15 VDC) 310 mA (+24 VDC)																							
Power dissipation (typical)	1.5 W at +5 VDC 2 W at +15 VDC 1.75 W at -15 VDC 8 W at 24 VDC																							
Overvoltage category	I for power per ANSI/ISA S82.01-1994																							
Electromagnetic Compatibility																								
Conducted transients	<table><tr><th>Test</th><th>Common Mode</th><th>Normal Mode</th></tr><tr><td>Pulse voltage test (1.2/50 μS) (IEC 801-5)</td><td>2 kVp</td><td>1 kVp</td></tr><tr><td>Line frequency wave (50 Hz)</td><td>50 Vp</td><td>N/A</td></tr><tr><td>Low voltage wave train (Sweep from 10 KHz to 1 MHz)</td><td>50 Vp</td><td>N/A</td></tr><tr><td>Damped 1 MHz oscillatory wave (IEC 1000-4-12)</td><td>1 kVp</td><td>0.5 kVp</td></tr><tr><td>Electrical fast transient/burst (IEC 801-4)</td><td>1 kVp</td><td>N/A</td></tr><tr><td>Conducted RF interferences (IEC 801-6 level 3)</td><td>10 V RMS</td><td>N/A</td></tr></table> <p>Keep cabinet doors closed. Do not use communication equipment closer than 2 m (6 ft) from the cabinet.</p>			Test	Common Mode	Normal Mode	Pulse voltage test (1.2/50 μS) (IEC 801-5)	2 kVp	1 kVp	Line frequency wave (50 Hz)	50 Vp	N/A	Low voltage wave train (Sweep from 10 KHz to 1 MHz)	50 Vp	N/A	Damped 1 MHz oscillatory wave (IEC 1000-4-12)	1 kVp	0.5 kVp	Electrical fast transient/burst (IEC 801-4)	1 kVp	N/A	Conducted RF interferences (IEC 801-6 level 3)	10 V RMS	N/A
Test	Common Mode	Normal Mode																						
Pulse voltage test (1.2/50 μS) (IEC 801-5)	2 kVp	1 kVp																						
Line frequency wave (50 Hz)	50 Vp	N/A																						
Low voltage wave train (Sweep from 10 KHz to 1 MHz)	50 Vp	N/A																						
Damped 1 MHz oscillatory wave (IEC 1000-4-12)	1 kVp	0.5 kVp																						
Electrical fast transient/burst (IEC 801-4)	1 kVp	N/A																						
Conducted RF interferences (IEC 801-6 level 3)	10 V RMS	N/A																						
Mounting	Occupies one slot in standard INFI 90 OPEN module mounting unit.																							

Table 1-5. Specifications (continued)

Property	Characteristic/Value
Environmental	
Ambient temperature	0° to 70° C (32° to 158° F)
Relative humidity	0% to 95% up to 55° C (131° F)(noncondensing) 0% to 45% at 70° C (158° F)(noncondensing) Pollution degree: I (no condensation)
Altitude	Sea level to 3 km (1.86 miles)
Air quality	Noncorrosive
CE mark declaration	This product, when installed in an INFI 90 OPEN cabinet, complies with the following Directives/Standards for CE marking.
EMC96 Directive 89/336/EEC	EN50082-2 Generic Immunity Standard - Part 2: Industrial Environment EN50081-2 Generic Emission Standard - Part 2: Industrial Environment
Low Voltage Directive 73/23/EEC	EN61010-1 Safety Requirements for Electrical Equipment for Measurement, Control and Laboratory Use - Part 1: General Requirements
Certification	
Canadian Standards Association (CSA)	Certified for use as process control equipment in an ordinary (nonhazardous) location.
Factory Mutual (FM) (pending)	Approval for the following categories: Nonincendive for: Class I Division 2, Groups A,B,C,D Class II, Division 2, Groups F,G

SPECIFICATIONS SUBJECT TO CHANGE WITHOUT NOTICE