



High Resolution Analog I/O Modules

Catalog Numbers 1756-IF8I, 1756-IF8IK, 1756-IRT8I, 1756-IRT8IK,
1756-OF8I, 1756-OF8IK, 1756-IR12, 1756-IR12K, 1756-IT16, 1756-IT16K



Allen-Bradley

by **ROCKWELL AUTOMATION**

User Manual

Original Instructions

1756-IR12, 1756-IR12K
Diagrams

Figure 20 - 1756-IR12, 1756-IR12K Block Diagram

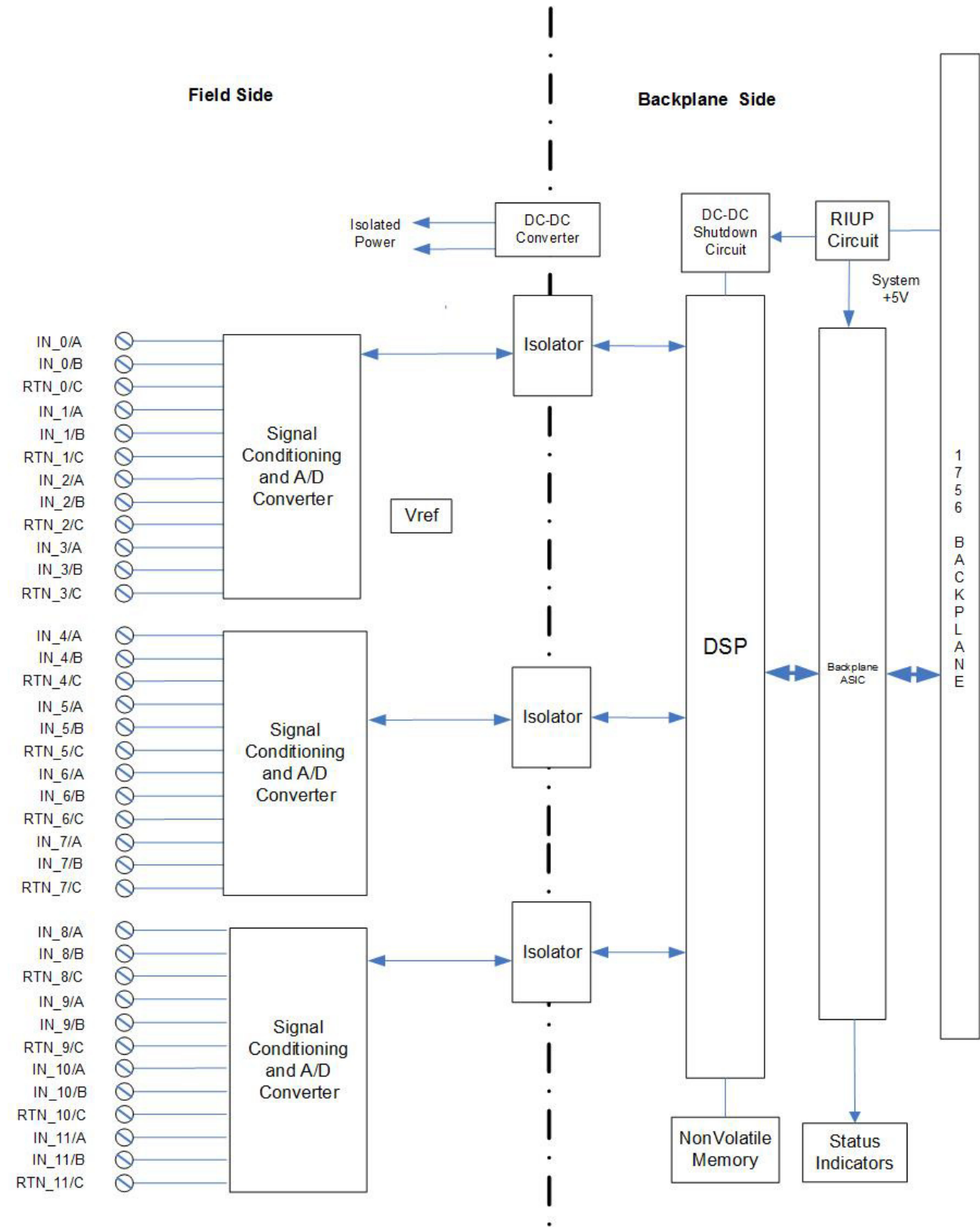


Figure 21 - 1756-IR12, 1756-IR12K Field-side Circuit with RTD Input

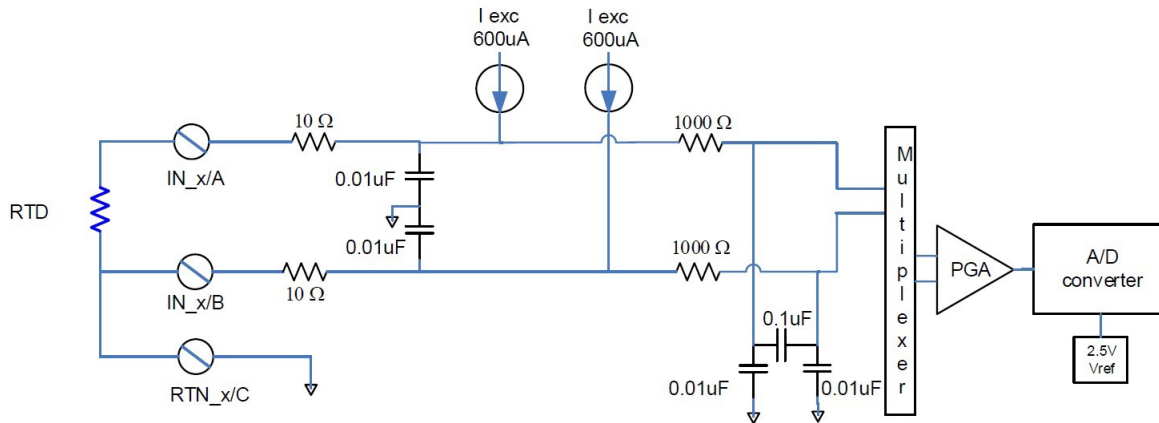
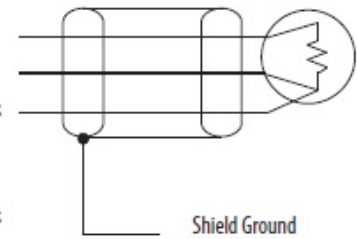
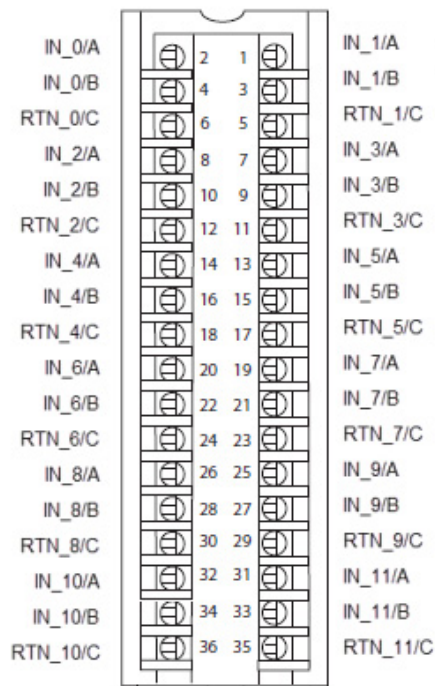
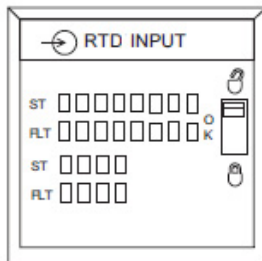


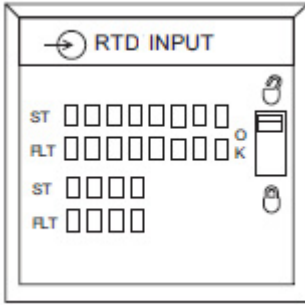
Figure 22 - 1756-IR12, 1756-IR12K Wiring Diagram - 3-wire RTD Input

IMPORTANT: Remember the following:

- If separate power sources are used, do not exceed the specific isolation voltage as listed in the specifications.
- For 2-wire resistor applications including calibration, make sure IN_x/B and RTN_x/C are shorted together.

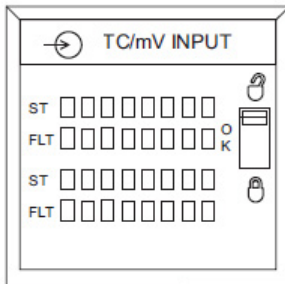


Status Indicators for the 1756-IR12, 1756-IR12K Module



Indicator	Status	Description
OK	Steady green	The module is in a normal operating state in Run mode.
	Flashing green	The module passed internal diagnostics and is not actively controlled or the connection is open and the controller is in Program mode.
	Flashing red	Previously established communication has timed out.
	Steady red	Replace the module.
ST	Steady yellow	The channel is operating as expected.
	Flashing yellow	The channel is being calibrated.
	Off	The channel is not in use or is faulted.
FLT	Off	The channel is operating as expected or it is not in use
	Steady red	The channel is faulted. Some possible causes of the fault include: <ul style="list-style-type: none"> • Underrange/overrange detection • Wire off detection • CRC from ADC always Bad For more information on these causes see Chapter 4, Temperature-sensing Analog Modules on page 53
	Flashing red	The channel is faulted and is being calibrated. See the previous row for more information about faults.

Status Indicators for the 1756-IT16, 1756-IT16K Module



Indicator	Status	Description
OK	Steady green	The module is in a normal operating state in Run mode.
	Flashing green	The module passed internal diagnostics and is not actively controlled or the connection is open and the controller is in Program mode.
	Flashing red	Previously established communication has timed out.
	Steady red	Replace the module.
ST	Steady yellow	The channel is operating as expected.
	Flashing yellow	The channel is being calibrated.
	Off	The channel is not in use or is faulted.
FLT	Off	The channel is operating as expected or it is not in use.
	Steady red	The channel is faulted. Some possible causes of the fault include: <ul style="list-style-type: none"> • Underrange/overrange detection • Wire off detection • CRC from ADC always Bad For more information on these causes see Chapter , Temperature-sensing Analog Modules on page 53
	Flashing red	The channel is faulted and is being calibrated. See the previous row for more information about faults.