

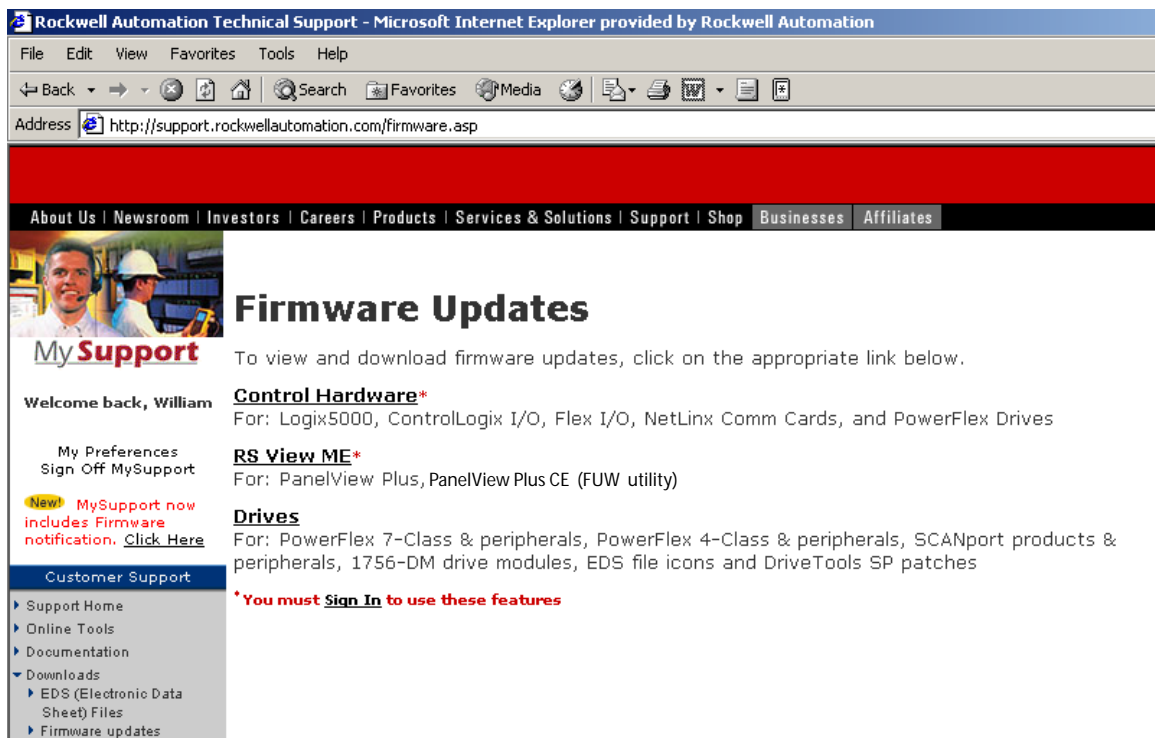
Upgrade a 2711P-RN15S Module Firmware

Objectives

This chapter shows how to upgrade the firmware for a 2711P-RN15S Series A, Rev. A ControlNet Communications Module to Rev. C for Scheduled messaging. This also applies to terminals pre-configured and shipped from the factory with a ControlNet Module. During the upgrade, the module firmware is updated from v2.7 to v3.8 or later.

The firmware upgrade is available at the Rockwell Automation Technical Support website under Firmware Updates and RSView ME.

All 2711P-RN15C ControlNet communication modules for PanelView Plus 400 and 600 support ControlNet Scheduled Messaging.

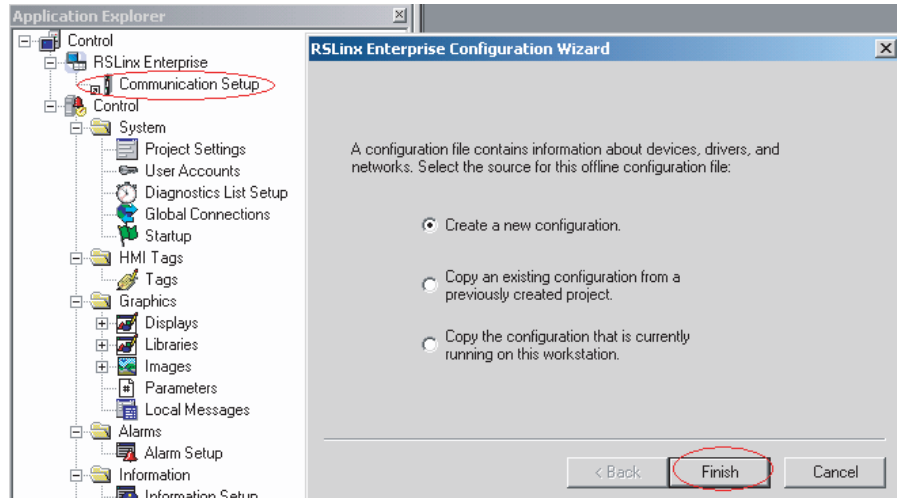


The screenshot shows a Microsoft Internet Explorer browser window displaying the Rockwell Automation Technical Support website. The address bar shows the URL: <http://support.rockwellautomation.com/firmware.asp>. The website has a red header with navigation links: About Us | Newsroom | Investors | Careers | Products | Services & Solutions | Support | Shop | Businesses | Affiliates. Below the header is a banner image of two technicians. The main content area is titled "Firmware Updates" and includes a "MySupport" section with a welcome message for "William". The "Firmware Updates" section lists three categories: "Control Hardware*" (Logix5000, ControlLogix I/O, Flex I/O, NetLinx Comm Cards, and PowerFlex Drives), "RS View ME*" (PanelView Plus, PanelView Plus CE (FUW utility)), and "Drives" (PowerFlex 7-Class & peripherals, PowerFlex 4-Class & peripherals, SCANport products & peripherals, 1756-DM drive modules, EDS file icons and DriveTools SP patches). A note at the bottom states: "*You must Sign In to use these features". The left sidebar contains a "Customer Support" menu with links to Support Home, Online Tools, Documentation, Downloads, EDS (Electronic Data Sheet) Files, and Firmware updates.

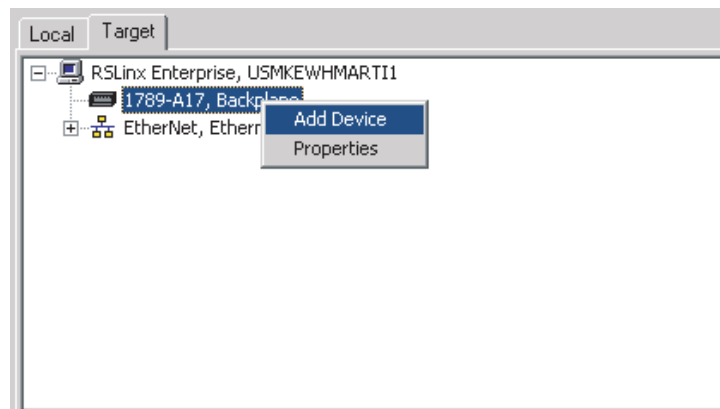
Configure the Communication Module

When a new 2711P-RN15S communication module is installed in a PanelView Plus or PanelView Plus CE, the terminal requires some basic settings to establish communications.

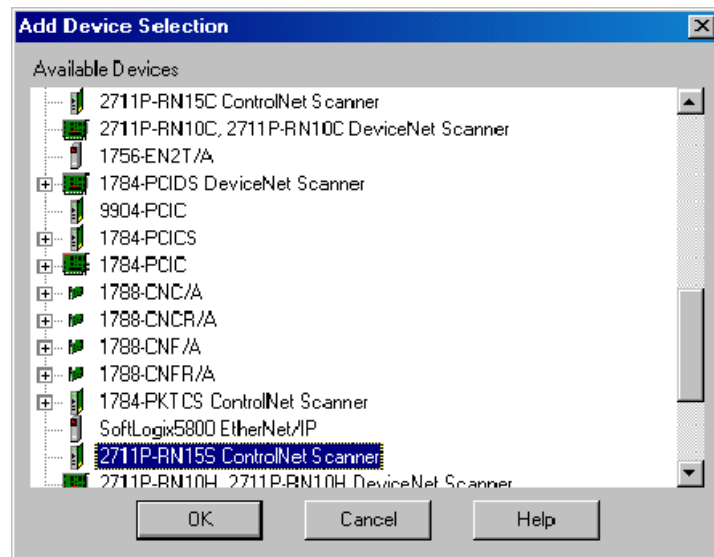
1. Create a new RSLinx Enterprise communication configuration by double-clicking on Communication Setup, select Create a new configuration, and click Finish.



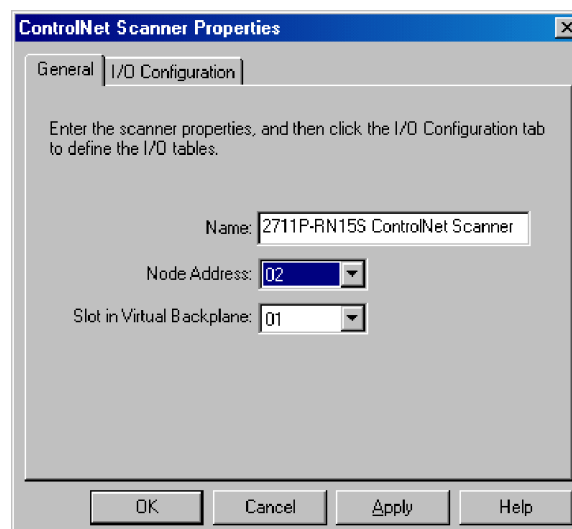
2. Click on the Target tab of the communication window.
To set the path for the target, the devices and drivers must be added manually because the development computer is not connected by ControlNet to the ControlLogix processor.
3. Right-click on the virtual backplane of the PanelView Plus / PanelView Plus CE labeled 1789-A17, Backplane, and select Add Device.



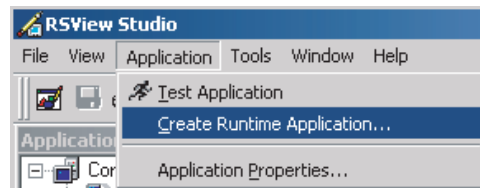
4. In the Add Device Selection dialog, select 2711P-RN15S, ControlNet Scanner Card for and click OK.



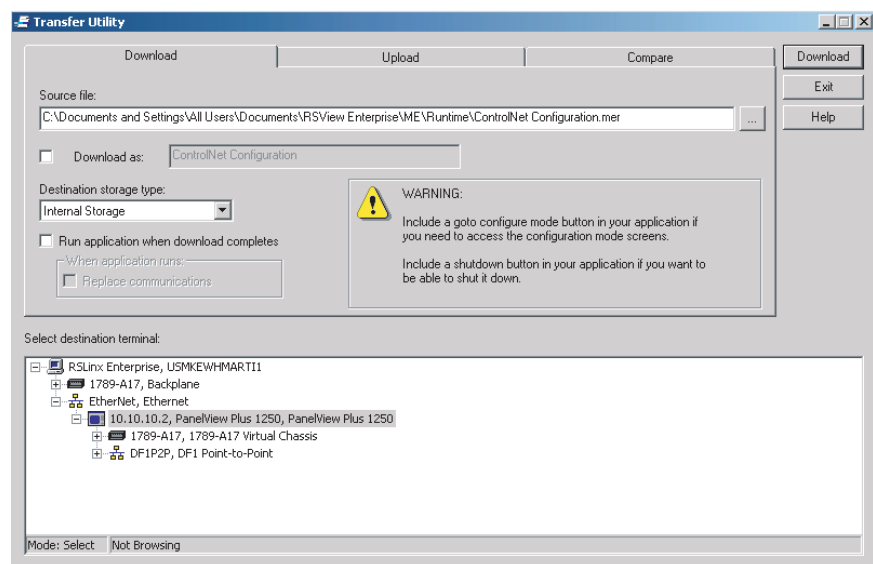
5. In the ControlNet Scanner Properties dialog, set the Node Address to 2 and click OK.
 - The node represents the unique node address (1-99) of the ControlNet Communication Module.
 - The slot corresponds to the position of the ControlNet communication module in the virtual backplane of the PanelView Plus / PanelView Plus CE, which is always 01.



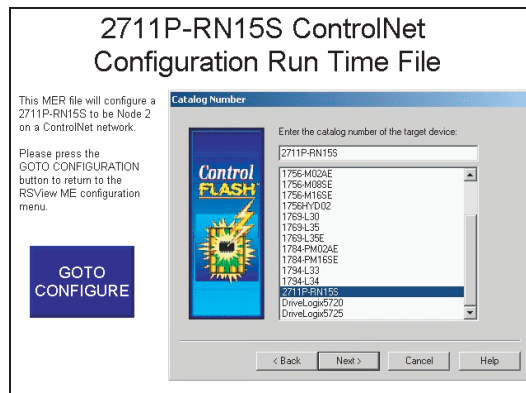
- From the Application menu, choose Create Runtime Application to create an RSVIEW Machine Edition runtime file.



- Compile the project, download it to the terminal, and run the project. If successful, the communication status LED's illuminate on the 2711P-RN15S module.



A sample .MER has been created to configure the 2711P-RN15S as Node 2 on a ControlNet network. This application is located on Technote A103053983 on the Rockwell Automation Technical Support Knowledgebase at <http://support.rockwellautomation.com>. Download and run ControlNet Configuration.mer on the PanelView Plus or PanelView Plus CE.



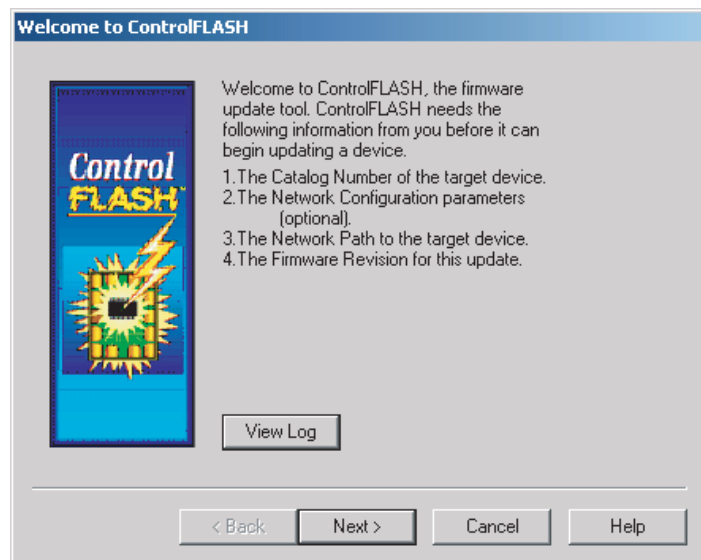
8. Click the Goto Configure button to return to the RSView ME configuration menu.

You can now upgrade the firmware in the 2711P-RN15S ControlNet module to v3.8 or later.

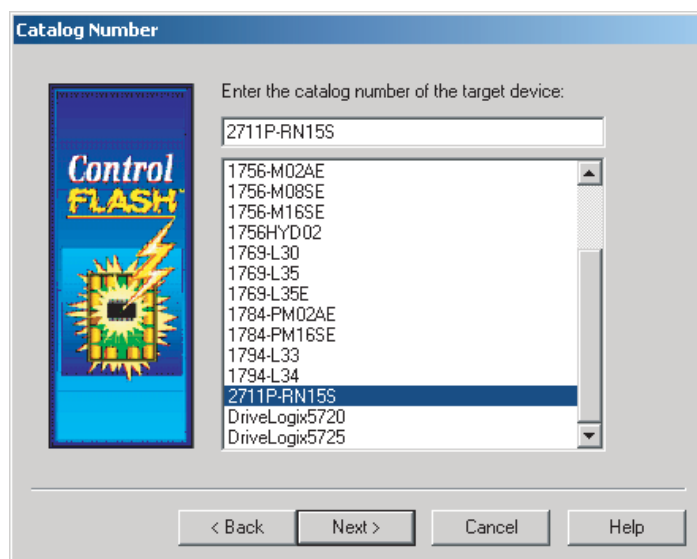
Upgrade the ControlNet Module Firmware to v3.8 or later

After the 2711P-RN15S Series A, Revision A module is initially configured, you must upgrade the module firmware to v3.8 or later to support ControlNet Scheduled messaging.

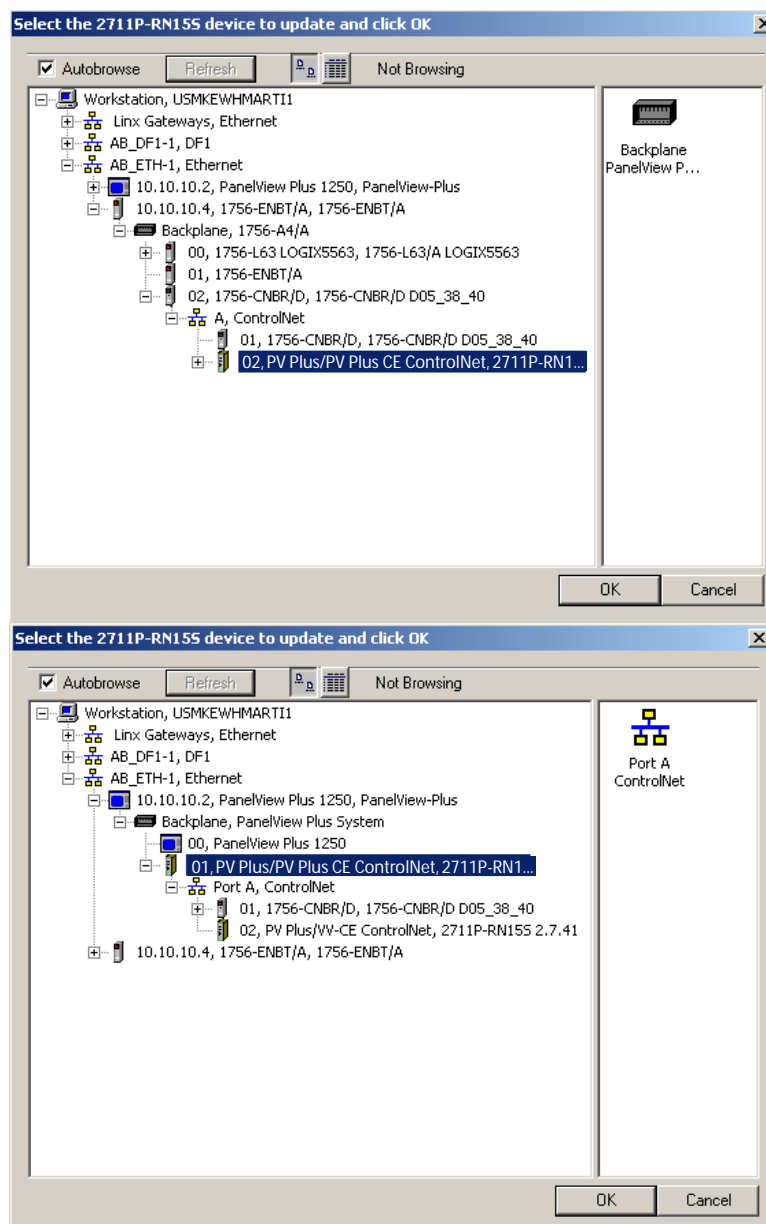
1. Start the ControlFlash firmware upgrade utility and click Next.



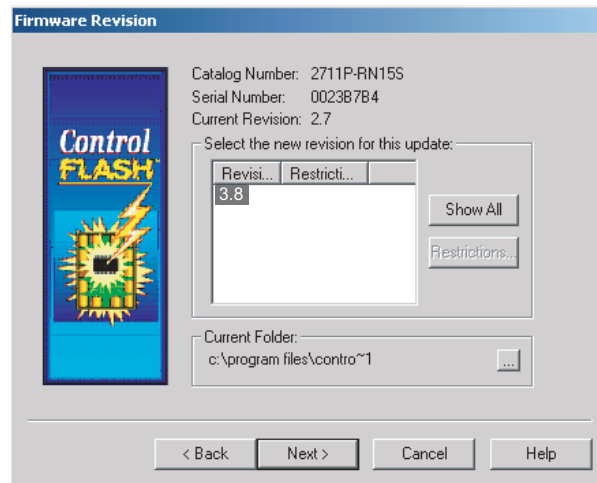
2. Select 2711P-RN15S and click Next.



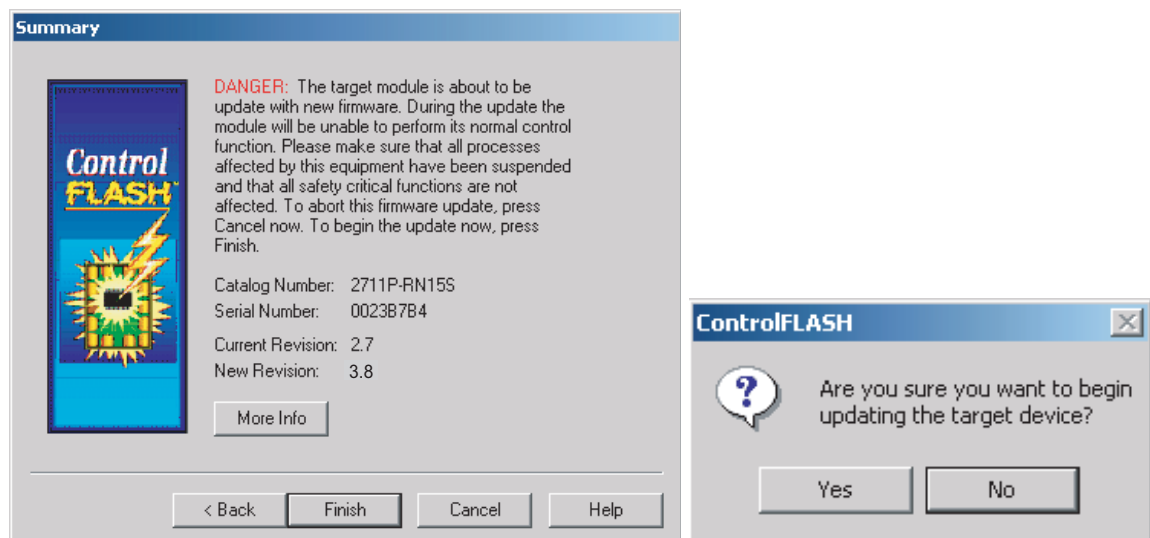
3. Select 2711P-RN15S to upgrade via an Ethernet or ControlNet network and click OK.



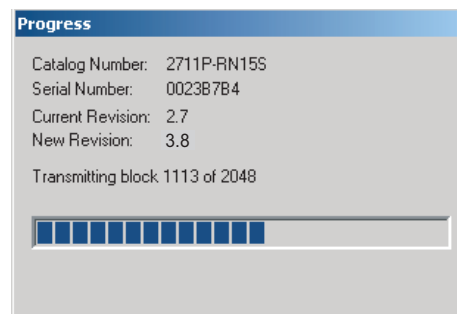
4. Select the firmware revision for the upgrade and click Next.



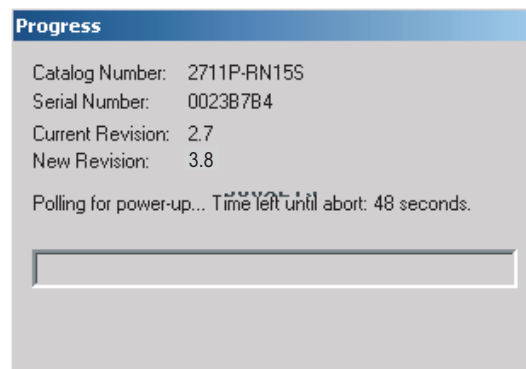
5. Click Finish and then Yes to begin the firmware upgrade process.



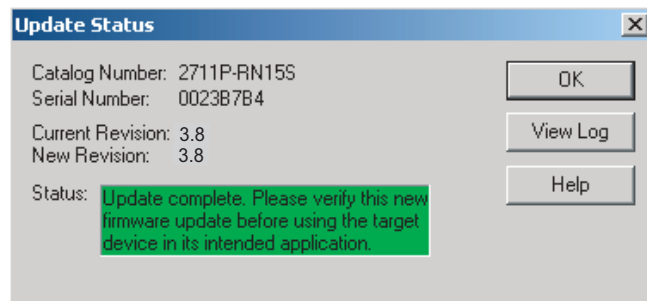
Communications will begin and the firmware will update.



- When the upgrade is complete, cycle power on the PanelView Plus or PanelView Plus CE.



When the terminal recycles power, the Control Flash firmware upgrade utility verifies the communication card update.



- Click OK.