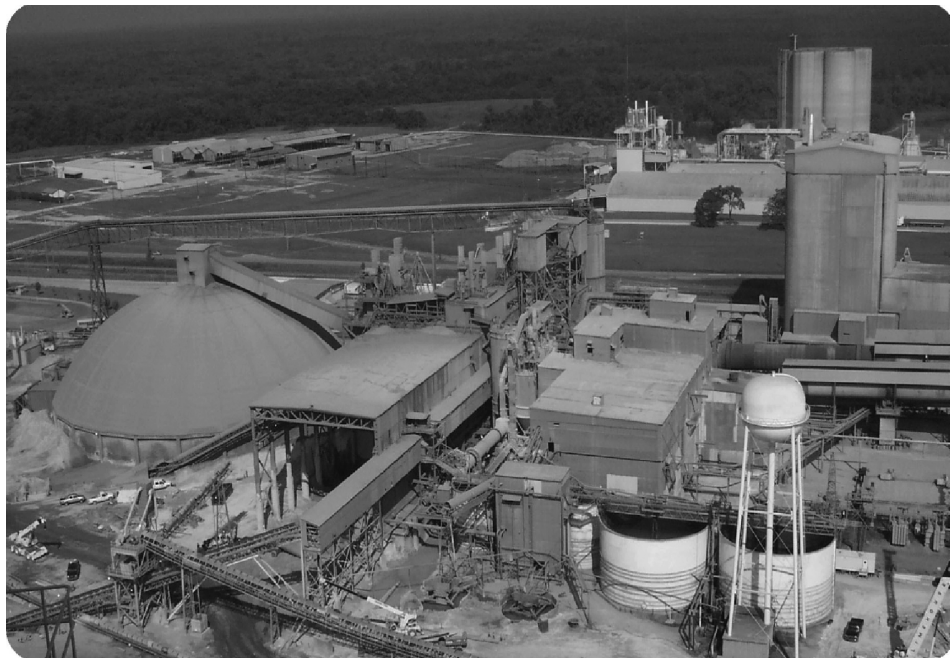


PowerFlex 7000 Medium Voltage AC Drives

Bulletin Numbers 7000A, 7000, 7000L



Important User Information

Read this document and the documents listed in the additional resources section about installation, configuration, and operation of this equipment before you install, configure, operate, or maintain this product. Users are required to familiarize themselves with installation and wiring instructions in addition to requirements of all applicable codes, laws, and standards.

Activities including installation, adjustments, putting into service, use, assembly, disassembly, and maintenance are required to be carried out by suitably trained personnel in accordance with applicable code of practice.

If this equipment is used in a manner not specified by the manufacturer, the protection provided by the equipment may be impaired.

In no event will Rockwell Automation, Inc. be responsible or liable for indirect or consequential damages resulting from the use or application of this equipment.

The examples and diagrams in this manual are included solely for illustrative purposes. Because of the many variables and requirements associated with any particular installation, Rockwell Automation, Inc. cannot assume responsibility or liability for actual use based on the examples and diagrams.

No patent liability is assumed by Rockwell Automation, Inc. with respect to use of information, circuits, equipment, or software described in this manual.

Reproduction of the contents of this manual, in whole or in part, without written permission of Rockwell Automation, Inc., is prohibited

Throughout this manual, when necessary, we use notes to make you aware of safety considerations.



WARNING: Identifies information about practices or circumstances that can cause an explosion in a hazardous environment, which may lead to personal injury or death, property damage, or economic loss.



ATTENTION: Identifies information about practices or circumstances that can lead to personal injury or death, property damage, or economic loss. Attentions help you identify a hazard, avoid a hazard, and recognize the consequence.

IMPORTANT Identifies information that is critical for successful application and understanding of the product.

Labels may also be on or inside the equipment to provide specific precautions.



SHOCK HAZARD: Labels may be on or inside the equipment, for example, a drive or motor, to alert people that dangerous voltage may be present.



BURN HAZARD: Labels may be on or inside the equipment, for example, a drive or motor, to alert people that surfaces may reach dangerous temperatures.



ARC FLASH HAZARD: Labels may be on or inside the equipment, for example, a motor control center, to alert people to potential Arc Flash. Arc Flash will cause severe injury or death. Wear proper Personal Protective Equipment (PPE). Follow ALL Regulatory requirements for safe work practices and for Personal Protective Equipment (PPE).

	Preface	
	Summary of Changes	5
	About this Publication.....	5
	Who Should Use This Manual	5
	Acronyms and Abbreviations.....	5
	Additional Resources	8
	Chapter 1	
Fault Messages	Overview	9
	Fault Messages	10
	Chapter 2	
Warning Messages	Overview	53
	Warning Messages.....	54
	Appendix A	
Spare Parts	Components and Related Part Numbers	87
	Appendix B	
Fault Codes	Listed Numerically	89
	Appendix C	
Warning Codes	Listed Numerically	107

Spare Parts

This appendix lists the available spare parts for the PowerFlex® 7000 medium voltage drive.

Components and Related Part Numbers

Item	Description	Part Number
Batteries	DPM Battery	346567-Q01
Control Boards		
ACB	Analog Control Board for 18 Pulse Drive	80190-560-01-R
ACB	Analog Control Board for NON 18 Pulse Drive	80190-560-02-R
DPM	Drive Processor Board	80190-580-01-R
XIO	External Input / Output board (120...240V AC)	80190-300-01-R
XIO	External Input / Output board (12...24V AC)	80190-300-02-R
Power Electronics		
SGCT single device		
400A	Single 400A SGCT	81004-286-51-R
800A	Single 800A SGCT	81001-450-51-R
1500A	Single 1500A SGCT	81001-451-61-R
1750A	Single 1750A SGCT	81001-451-71-R
SGCT Matched set of two		
400A	Matched set of two 400A SGCT	81004-286-52-R
800A	Matched set of two 800A SGCT	81001-450-52-R
1500A	Matched set of two 1500A SGCT	81001-451-62-R
1750A	Matched set of two 1750A SGCT	81001-451-72-R
SGCT Matched set of three		
400A	Matched set of three 400A SGCT	81004-286-53-R
800A	Matched set of three 800A SGCT	81001-450-53-R
1500A	Matched set of three 1500A SGCT	81001-451-63-R
1750A	Matched set of three 1750A SGCT	81001-451-73-R
SGCT Matched set of four		
1750A	Matched set of four 1750A SGCT, marine drive Dynamic Brake	81001-451-74-R
SCR single device		
350A	Single 350A SCR	81001-335-71-R
800A	Single 800A SCR	81003-437-51-R

Item	Description	Part Number
SCR Matched set of two		
350A	Matched set of two 350A SCR	81001-335-72-R
800A	Matched set of two 800A SCR	81003-437-52-R
SCR Matched set of three		
350A	Matched set of three 350A SCR	81001-335-73-R
800A	Matched set of three 800A SCR	81003-437-53-R
Power Supplies		
AC/DC	Single phase input, 56V DC output, AC/DC 1000W	80026-529-01-R
AC/DC	Single phase input, 56V DC output, AC/DC 1500W	80026-524-01-R
AC/DC	Single phase input, 56V DC output, AC/DC 300W	80026-088-01-R
DC/DC	56V DC input, Absopulse	80026-518-01-R
IGDPS	56V DC / 20V DC	80026-044-06-R