



**Moore  
Automated**

[www.mooreautomated.com](http://www.mooreautomated.com)

## Specializing In:

- Control Systems (DCS, PLC, CNC)
- Panel Controllers
- HMI and Display Panels
- Drives
- Encoders and Resolvers
- Power Supplies

# 20 Years Automation Experience



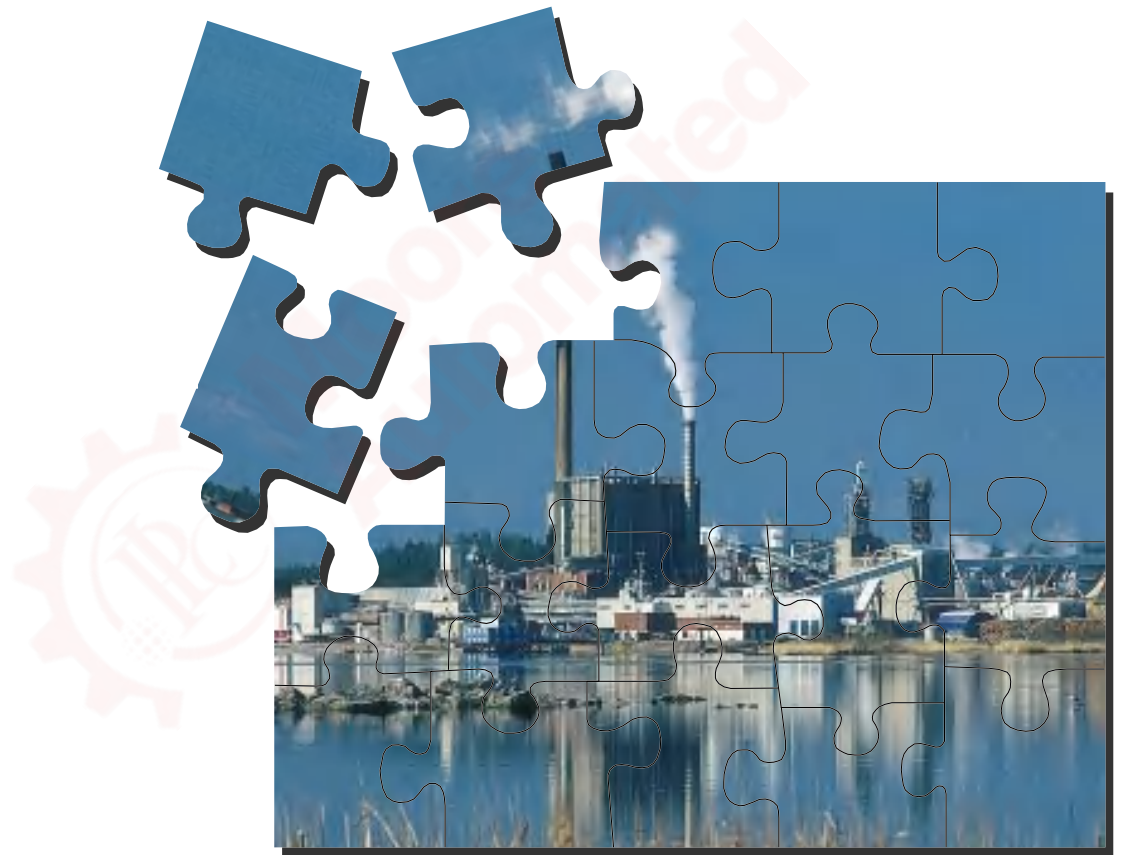
## Moore Automated: Your Trusted Automation Solution Expert

Moore Automated is a global automation parts reseller focused on hard-to-find and obsolete industrial automation products. Today we already have 20 years experience in automation area. In past time we insist to offer best service to worldwide client, In future we will also offer good quality and satisfied service again.

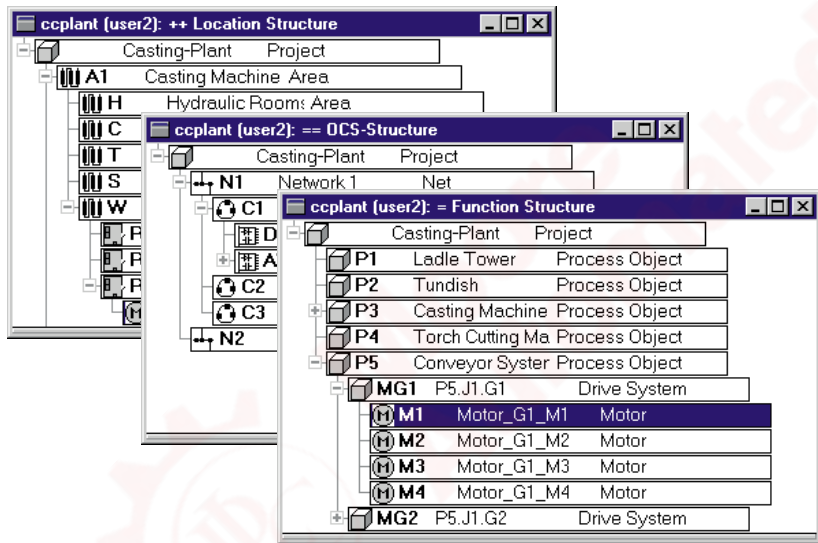
# Advant<sup>®</sup> OCS

Open Control System

Advant Engineering Workplace



Advant Engineering  
Workplace creates order out  
of a mountain of engineering  
data by putting it into  
hierarchical, multifaceted,  
structures for easy access

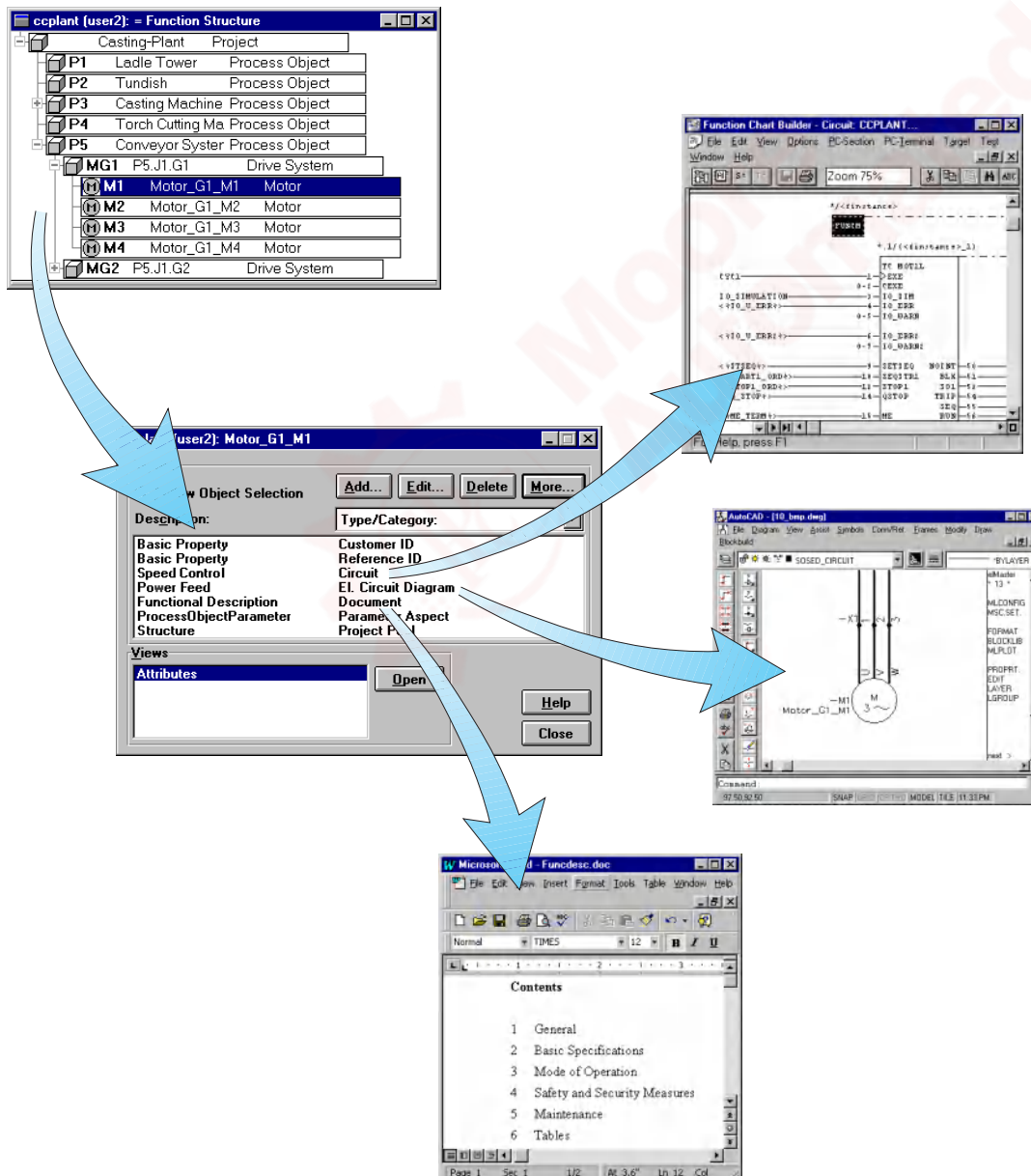


## Aspects, a way to extract the relevant

However, which object details are relevant varies from discipline to discipline. That is why Advant Engineering Workplaces supports multiple aspects of every object at every level. So that the fitter, the electrician, the control system configurator and the commissioning and maintenance engineers

can obtain the information they need individually for each impending task, no more, no less.

Finally, aspects offer different views of its data to facilitate extracting subsets of information to suit different tasks. For instance, graphic application programs represent one view, program listings another.



Aspects and views make it easy to extract the relevant information at every step. Here a motor drive object being opened in the form of an AMPL program, an electrical circuit diagram and a textual specification

# High-speed, high-quality engineering

## Structure Builder: the main navigation tool

Structure Builder is the main data navigation tool of Advant Engineering Workplace. It provides functionality such as:

- project structure creation and maintenance by means of data management functions such as Create, Import, Delete, Cut, Copy, Paste, Move, etc.,
- project structure navigation and searching, making it easy to find the Advant Objects one is looking for and thereby the engineering data associated with them, and
- access to data and thereby to appropriate editing tools. These editing tools can be industry-standard software such as:
  - MS Word for producing documents,
  - MS Excel for handling lists of different kinds, and
  - MS Access for storing engineering data, as well as more specialized software like
  - Function Chart Builder for control system configuration,
  - Electrical Diagram Builder for computer-aided electrical design (based on AutoCAD), and
  - On-line Builder for on-line system (re)configuration and fault tracing.

## Progress on a broad front

Advant Engineering Workplace is a highly scalable multiclient system which is based on Windows NT. It is as feasible for workgroups of only two or three people as for several tens of people. Its graphic visualization of projects makes it easy to see what they consist of, what remains to be done - and to communicate this to others. The moment new contributions are made to the body of engineering data in the project structure they become instantly available to all other project members to build on. That is why the system promotes teamwork for progress on a broad front.

The full import/export capabilities of the associated editing tools are available, which means that useful engineering work done previously - and elsewhere - can easily be made use of again. For the same reason, it is easy to exchange engineering work with others, not necessarily working on Advant Engineering Workplace stations.

When time schedules are tight and more resources have to be deployed to meet critical deadlines, you can't have a better assistant than Advant Engineering Workplace.

Advant Engineering Workplaces is a highly scalable multiclient system, promoting teamwork for progress on a broad front



Export/Import



## Application program generation by 'drag and drop'

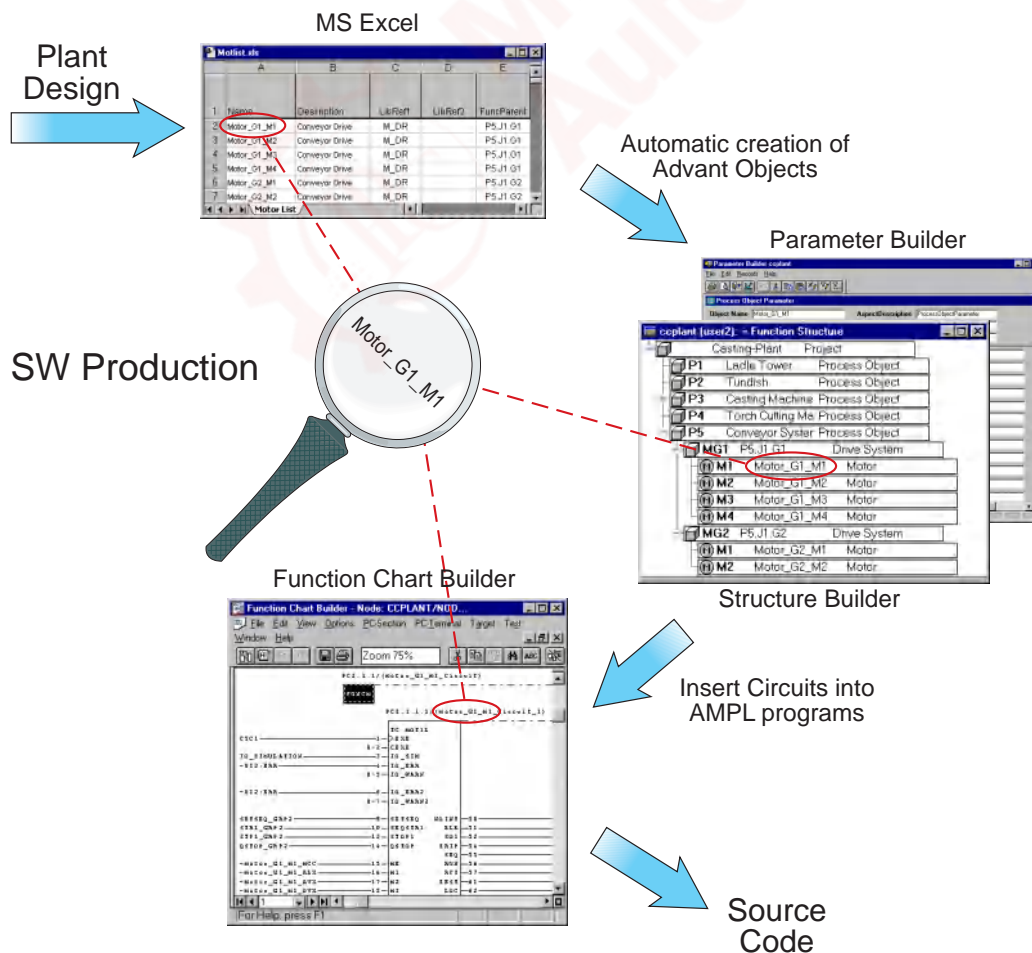
Advant Engineering Workplace supports the development and re-use of standard solutions, e.g. in the form of circuits and Function Blocks in AMPL, the graphic application programming language used throughout Advant OCS with Master software. These program circuits and program elements only require project-specific parameter values to become operational. So the quickest way to create ready-to-run AMPL programs for objects, be they motor drives, control valves or temperature control loops, is to import parameter lists, created in just about any text editor or spreadsheet application, specifying the desired library objects and parameter values.

The process is as easy as reading these few lines.

But of course, more often than not, all the data required to fully specify each Advant Object is not available at the same point in time. In such cases one simply imports what's available at one time and supplements with the remainder at another. It's that simple.

Another time-saving possibility is to assign the desired program circuits to AMPL programs by drag and drop.

This is high-speed, high quality automation project engineering, Advant Engineering Workplace style.



On import of process device lists specifying library circuits, I/O references and parameter settings, Advant Engineering Workplace creates AMPL programs efficiently



# Moore Automated: Your Strategic Partner for Industrial Spares and Solutions

## Moore Automated - Global Supplier Of Industrial Automation Parts

- Expert Consultancy: Technical sales specialists with 10+ years of industry expertise
- 24/7 Responsive Support: AI-powered customer service and engineer hotline
- Quality Commitment: 12-month global warranty on all products
- Supply Chain Assurance: Million-level SKU inventory for industrial spare parts
- Worldwide Delivery: DDP (Delivered Duty Paid) logistics solutions covering 150+ countries



**Moore  
Automated**

[www.mooreautomated.com](http://www.mooreautomated.com)

Email: [miya@mvme.cn](mailto:miya@mvme.cn) | WhatsApp: 86 - 180 2077 6792