



**Moore
Automated**

www.mooreautomated.com

Specializing In:

- Control Systems (DCS, PLC, CNC)
- Panel Controllers
- HMI and Display Panels
- Drives
- Encoders and Resolvers
- Power Supplies

20 Years Automation Experience



Moore Automated: Your Trusted Automation Solution Expert

Moore Automated is a global automation parts reseller focused on hard-to-find and obsolete industrial automation products. Today we already have 20 years experience in automation area. In past time we insist to offer best service to worldwide client, In future we will also offer good quality and satisfied service again.



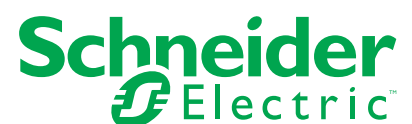
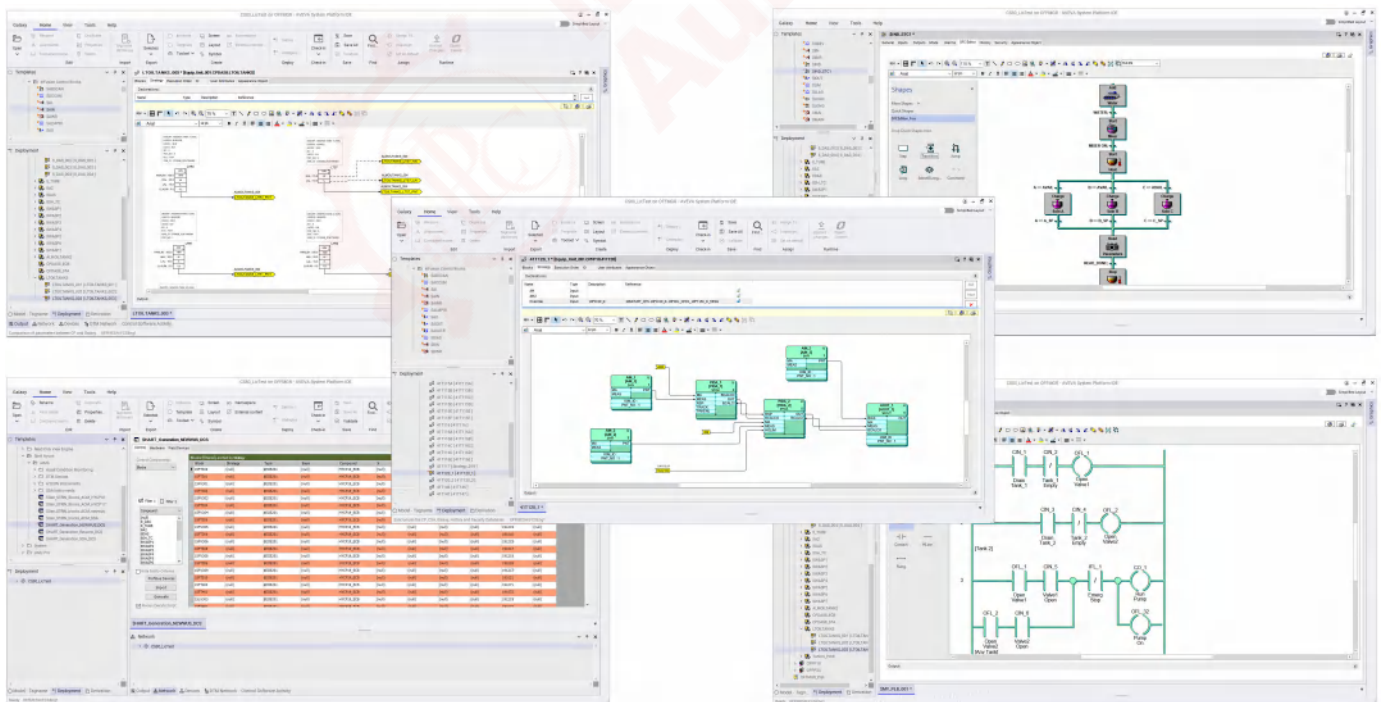
Foxboro™ DCS

Control Editors

PSS 41S-10EDITOR

Product Specification

December 2024



Features

- Configurable permissions and actions to help secure configuration database
- Graphical construction and deployment of Foxboro DCS control strategies
- Graphical support for programmable block logic (ladder logic, PLB, CALC, HLBL)
- Construction of re-usable control strategy component and composite designs
- User-defined renderings of reusable control strategy components and composites, including standard Scientific Apparatus Makers Association (SAMA) symbols
- Printed reports of control strategy drawings and supporting information
- Microsoft® SQL Server® and Microsoft Excel® reporting interfaces for configuration data
- Flexible, intuitive Excel interface to edit configurations
- Live updates/edits of real-time values superimposed on control strategy drawings to help debug configurations without the human-machine interface (HMI)
- Bulk generation of control strategies from stored templates and external project data
- Bulk migration of control strategies from installed I/A Series® and Foxboro DCS
- Ability to import and export control strategy designs
- Ability to create and deploy Archestra® IAS platforms, engines, application objects
- Support for configuring FOUNDATION fieldbus and PROFIBUS-based intelligent devices and fieldbus networks
- Remote Desktop Services

Benefits

The Control Editors offer substantial engineering productivity and quality gains to application designers and project engineers during:

- Initial project engineering through programmatic interfaces to third-party applications and external file systems supporting XML information exchange
- All project lifecycle stages, where the documentation is kept in synch with the configuration, as modifications are made
- Large scale expansions and modifications to the current designs
- Interoperability with other Foxboro and third-party applications

They also offer enhanced value to those users who want to use the Foxboro DCS in more than one project. They provide the ability to migrate intellectual property from one installation to another with extensive tools to edit that intellectual property to fit the circumstances of the new project.

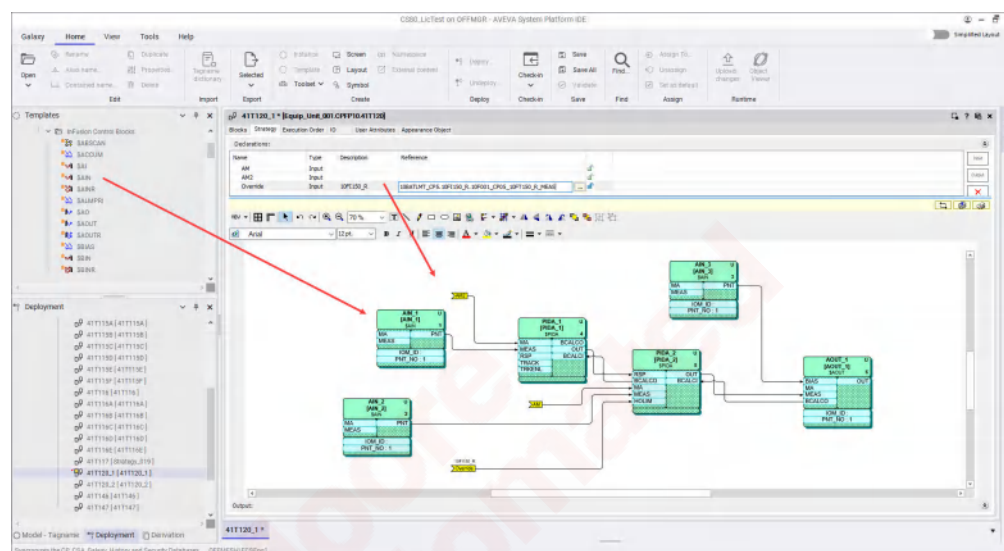
The Control Editors are useful to current users of Foxboro DCS who want to upgrade their existing system to the latest technology, using utilities that convert the intellectual property in their existing system to the paradigms of the new system. This can include graphical representations of control strategies.

Graphical editors within the configuration tool set utilize and take advantage of the Microsoft Visio® application as the rendering engine.

The Control Editors provide graphical design, configuration, deployment and commissioning tools for systems using protocols such as PROFIBUS and FOUNDATION Fieldbus (FF). The graphical design tool for Strategy construction is shown in this figure.

Strategy Construction

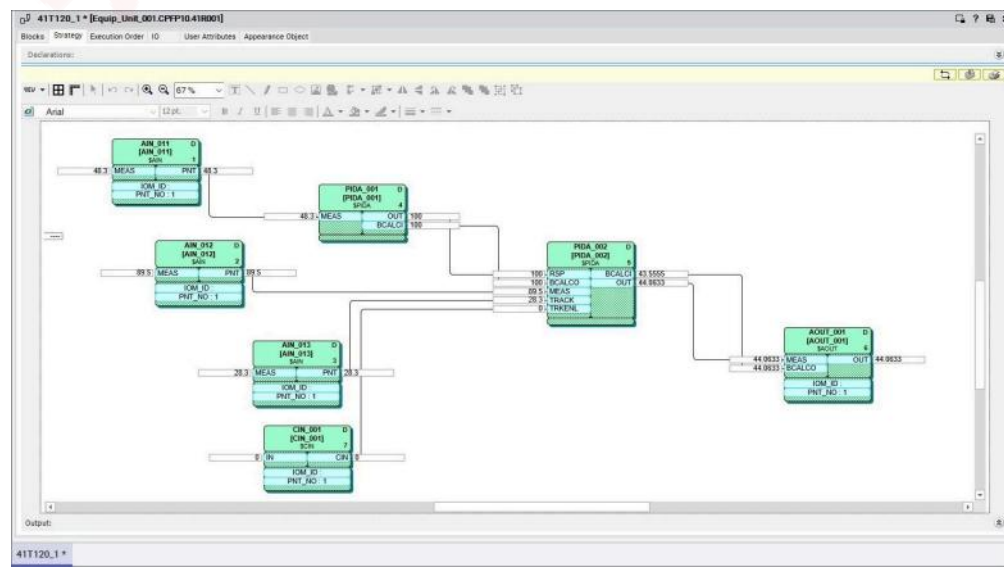
Strategies are encapsulated and reusable control applications that can be combined to build an overall plant control. A new strategy is developed by deriving a new template or instance from the base or derived strategy, naming it, and opening it. This creates a new drawing canvas for constructing the strategy. Base or user-derived block templates are dropped onto the drawing canvas and linked together by connecting exposed parameters on the blocks using a line drawing. Strategy connectors (inputs or outputs) are created and dropped onto the canvas and linked to block parameters. These connectors link strategies together either from an inner to outer strategy as discussed or from a peer-to-peer strategy connection, as shown in this image.



Live Data Updates on Strategy Diagrams

The Control Editors provide a graphical display that superimposes real time updated values at the connections between blocks in a deployed strategy. It also provides the capability to access deployed control strategies from the Strategy Editor.

Blocks/strategies are selectable for editing purposes. The user can then upload values in the target controller to the database or download settable parameters in the database to the target controller without implementing a deploy procedure.



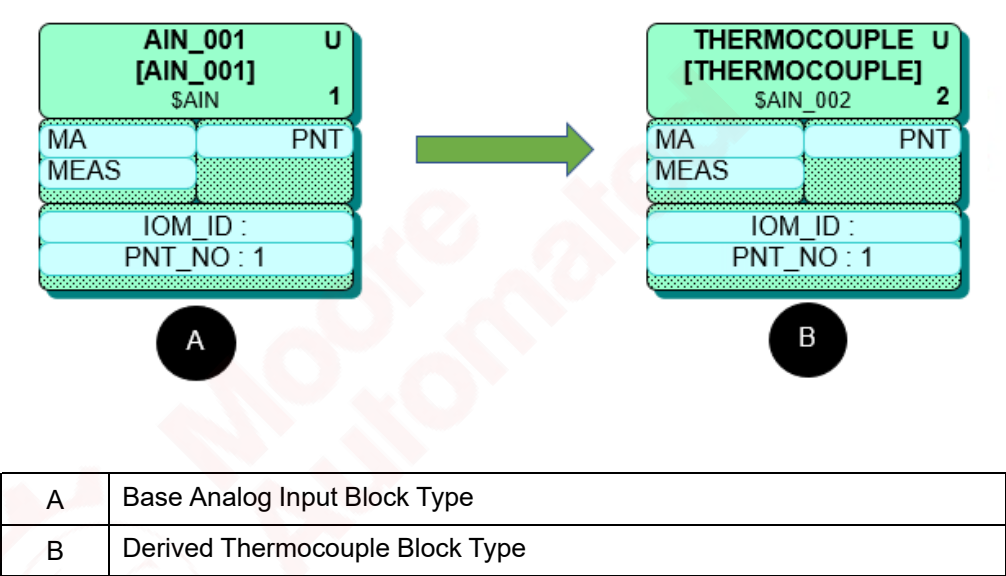
Block Properties and Behavior Specification

After a control strategy has been designed, its behavior and properties have to be specified. This primarily consists of specifying its constituent parts, namely base and user-derived blocks.

Blocks are available as either base or user-derived templates which are available for reuse in strategy templates or instances. In all cases specifying the properties and behavior of these blocks is the same.

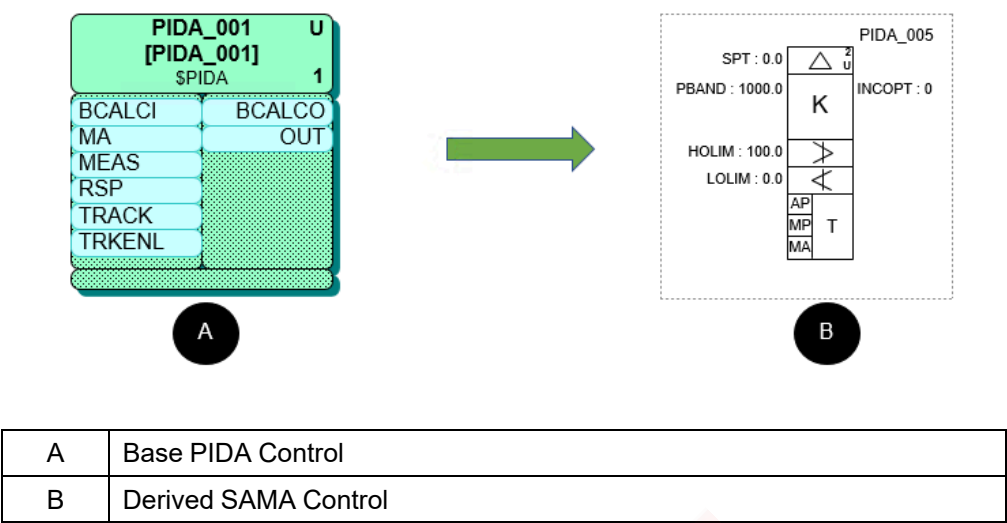
A new Derived Block Template represents a specialization of the original block type. Typical examples include specializing a base Analog Input block template to represent an Iron-Constantan thermocouple input block type.

Figure 2 - Derived Thermocouple



Other specializations include modifying the appearance or exposing certain features of various function blocks. One example would be to derive a base PIDA block into a specialized SAMA representation of a control entity.

Figure 3 - SAMA Representation

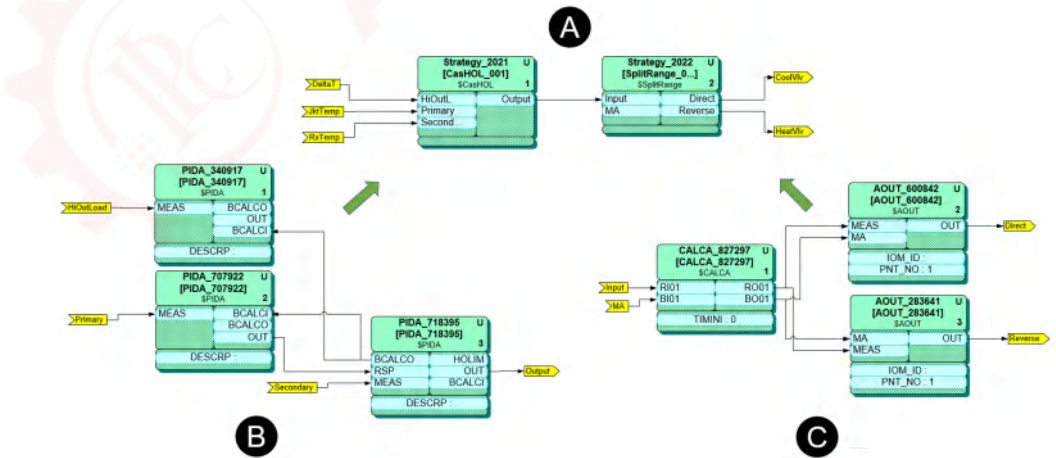


Strategies

The Strategy Editor enables users to compose an overall strategy by combining smaller strategies, or building blocks. This specialization process enables the user to create libraries of strategy templates that are composed of sets of connected blocks.

To illustrate this capability, this figure shows an example where a Reactor Temperature Control Strategy template has been constructed from inner strategy templates called CashOL and SplitRange. These inner strategy templates are formed from Foxboro DCS block types.

NOTE: The yellow connectors in the two inner strategies become connectable properties of the blocks in the outer strategy.



A	Reactor Temperature Control
B	Control with High Output Override
C	Split Range Control Valve

Programmable Block Editors

Foxboro DCS offers programmable block types, including:

- General purpose calculator style block types (MATH, LOGIC, CALC, CALCA).
- A series of block types programmed in the High Level Batch Language (HLBL).
- Block types programmed in Sequential Function Charts (FoxSFC).
- A block type that is programmed in a ladder logic diagram that executes in I/O modules.

The Control Editors provide a text editor for programming the HLBL and a graphical editor for programming FoxSFC and ladder logic diagrams.

Figure 4 - High Level Batch Language Editor

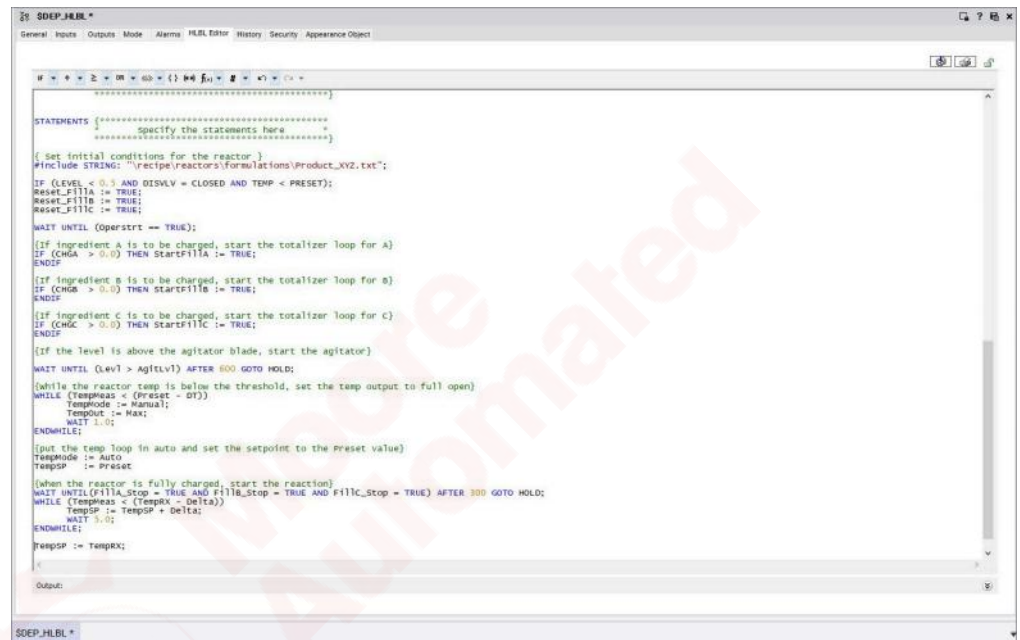


Figure 5 - Sequential Function Chart Editor

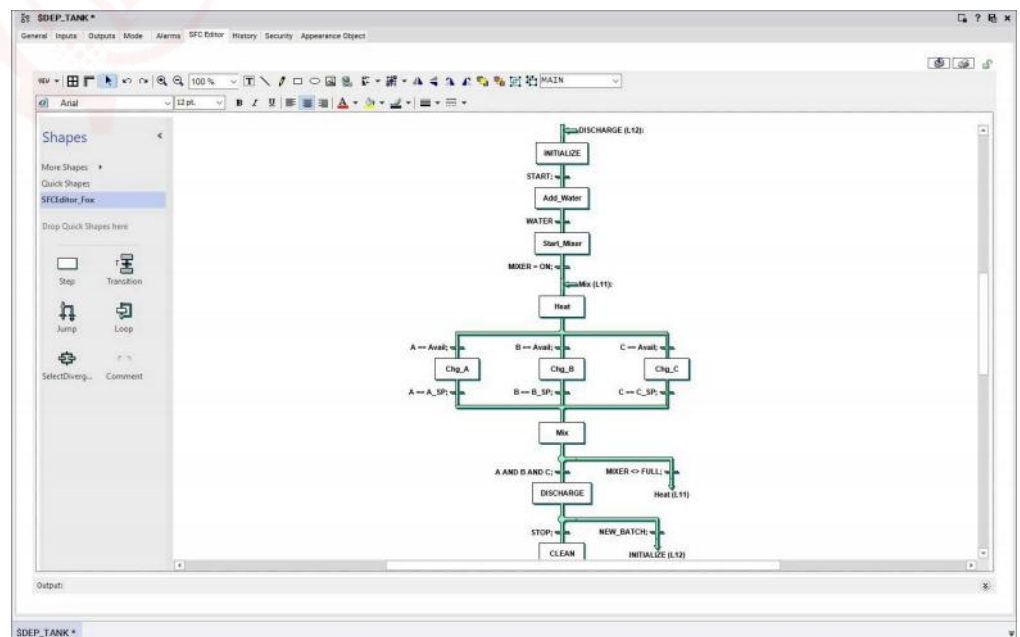
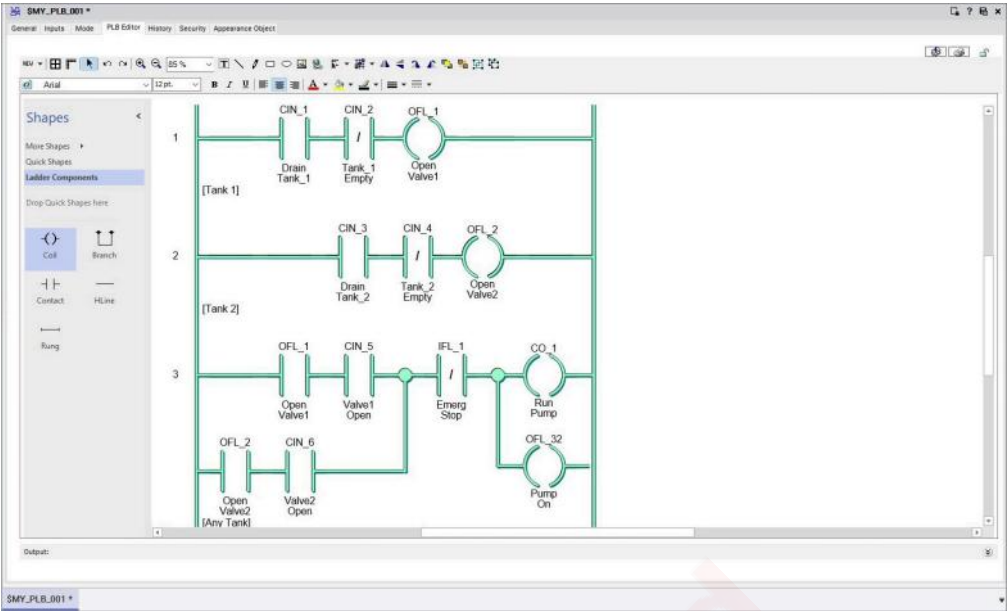


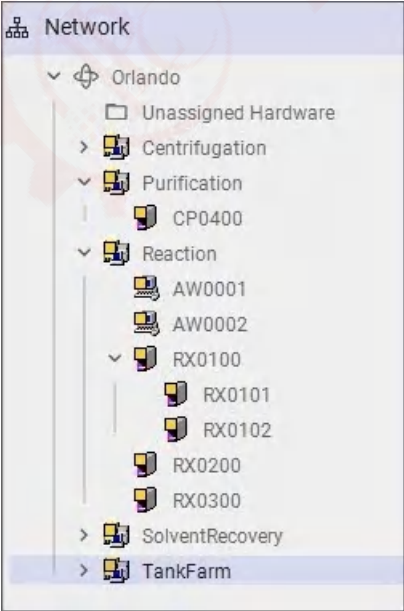
Figure 6 - Ladder Logic Diagram Editor



System Configuration

The Control Editors enable the user to construct a Foxboro DCS configuration, including control stations and Fieldbus Modules by instantiating these base types and renaming them according to user preferences. Then an engineer uses the Network View to assign these stations and modules to their designated unit areas.

This image shows five user defined unit areas in addition to the Unassigned Hardware node. These are Centrifugation, Purification, Reaction, Solvent Recovery, and Tank Farm. It further shows two workstations and three controllers assigned to the Reaction Area and two FBMs assigned to the RX0100 controller.



Intelligent Device Configuration

Control Editors support the access, configuration, monitoring, diagnostics, commissioning, and troubleshooting of digitized field devices connected using FOUNDATION FIELDBUS, HART, and PROFIBUS technologies. For more information, see:

- *EcoStruxure™ Foxboro™ DCS Field Device Expert for Foundation Fieldbus (PSS 41S-10FDMFF)*
- *EcoStruxure™ Foxboro™ DCS Field Device Expert for HART Devices (PSS 41S-10FDMHRT)*
- *EcoStruxure™ Foxboro™ DCS Field Device Expert for PROFIBUS-DP Devices (PSS 41S-10FDMPB)*

Bulk Generation of a Project

The Control Editors offer extensive engineering productivity tools such as the ability to bulk generate a project database from user defined templates combined with project specific information stored in formats like Microsoft® Excel® or CSV, SaveAll, IACC Export, SysDef Export, or in a proprietary XML document.

The Control Editors can also migrate control strategies stored in the existing Foxboro DCS installations from the data stored in existing control stations. The bulk data is first imported into a data grid allowing the user to inspect it and make any necessary additions or modifications.

SHART_Generation_NEWWUL_DCS

Control Hardware Field Devices

Control Components

Bids

Filter 1 Filter 2

none

Hide Empty Columns

Profibus Devices

Import

Generate

Always Execute Script

All Blocks, sorted by Strategy

Block	Strategy	Type	Base	Compound	X	Y	Locked	IOM_ID	DEV_ID	PNT_NO
15P100	(null)	SEC231	(null)	HYCP19_ECB	(null)	(null)	(null)	(null)	15P011	(null)
15P101	(null)	SEC231	(null)	HYCP19_ECB	(null)	(null)	(null)	(null)	15P012	(null)
15P102	(null)	SEC231	(null)	HYCP19_ECB	(null)	(null)	(null)	(null)	15P013	(null)
15P103	(null)	SEC231	(null)	HYCP19_ECB	(null)	(null)	(null)	(null)	15P014	(null)
15P104	(null)	SEC231	(null)	HYCP19_ECB	(null)	(null)	(null)	(null)	15P015	(null)
15P105	(null)	SEC231	(null)	HYCP19_ECB	(null)	(null)	(null)	(null)	15P016	(null)
15P106	(null)	SEC231	(null)	HYCP19_ECB	(null)	(null)	(null)	(null)	15P017	(null)
15P107	(null)	SEC231	(null)	HYCP19_ECB	(null)	(null)	(null)	(null)	15P018	(null)
15P108	(null)	SEC231	(null)	HYCP19_ECB	(null)	(null)	(null)	(null)	15P019	(null)
15P109	(null)	SEC231	(null)	HYCP19_ECB	(null)	(null)	(null)	(null)	15P020	(null)
15P110	(null)	SEC231	(null)	HYCP19_ECB	(null)	(null)	(null)	(null)	15P021	(null)
15P111	(null)	SEC231	(null)	HYCP19_ECB	(null)	(null)	(null)	(null)	15P022	(null)
15P112	(null)	SEC231	(null)	HYCP19_ECB	(null)	(null)	(null)	(null)	15P023	(null)
15P113	(null)	SEC231	(null)	HYCP19_ECB	(null)	(null)	(null)	(null)	15P024	(null)
15P114	(null)	SEC231	(null)	HYCP19_ECB	(null)	(null)	(null)	(null)	15P025	(null)
15P115	(null)	SEC231	(null)	HYCP19_ECB	(null)	(null)	(null)	(null)	15P026	(null)
15P116	(null)	SEC231	(null)	HYCP19_ECB	(null)	(null)	(null)	(null)	15P027	(null)
15P117	(null)	SEC231	(null)	HYCP19_ECB	(null)	(null)	(null)	(null)	15P028	(null)
15P118	(null)	SEC231	(null)	HYCP19_ECB	(null)	(null)	(null)	(null)	15P029	(null)
15P119	(null)	SEC231	(null)	HYCP19_ECB	(null)	(null)	(null)	(null)	15P030	(null)
15P120	(null)	SEC231	(null)	HYCP19_ECB	(null)	(null)	(null)	(null)	15P031	(null)
15P121	(null)	SEC231	(null)	HYCP19_ECB	(null)	(null)	(null)	(null)	15P032	(null)
15P122	(null)	SEC231	(null)	HYCP19_ECB	(null)	(null)	(null)	(null)	15P033	(null)
15P123	(null)	SEC231	(null)	HYCP19_ECB	(null)	(null)	(null)	(null)	15P034	(null)
15P124	(null)	SEC231	(null)	HYCP19_ECB	(null)	(null)	(null)	(null)	15P035	(null)
15P125	(null)	SEC231	(null)	HYCP19_ECB	(null)	(null)	(null)	(null)	15P036	(null)
15P126	(null)	SEC231	(null)	HYCP19_ECB	(null)	(null)	(null)	(null)	15P037	(null)
15P127	(null)	SEC231	(null)	HYCP19_ECB	(null)	(null)	(null)	(null)	15P038	(null)
15P128	(null)	SEC231	(null)	HYCP19_ECB	(null)	(null)	(null)	(null)	15P039	(null)
15P129	(null)	SEC231	(null)	HYCP19_ECB	(null)	(null)	(null)	(null)	15P040	(null)
15P130	(null)	SEC231	(null)	HYCP19_ECB	(null)	(null)	(null)	(null)	15P041	(null)
15P131	(null)	SEC231	(null)	HYCP19_ECB	(null)	(null)	(null)	(null)	15P042	(null)
15P132	(null)	SEC231	(null)	HYCP19_ECB	(null)	(null)	(null)	(null)	15P043	(null)
15P133	(null)	SEC231	(null)	HYCP19_ECB	(null)	(null)	(null)	(null)	15P044	(null)
15P134	(null)	SEC231	(null)	HYCP19_ECB	(null)	(null)	(null)	(null)	15P045	(null)
15P135	(null)	SEC231	(null)	HYCP19_ECB	(null)	(null)	(null)	(null)	15P046	(null)
15P136	(null)	SEC231	(null)	HYCP19_ECB	(null)	(null)	(null)	(null)	15P047	(null)
15P137	(null)	SEC231	(null)	HYCP19_ECB	(null)	(null)	(null)	(null)	15P048	(null)
15P138	(null)	SEC231	(null)	HYCP19_ECB	(null)	(null)	(null)	(null)	15P049	(null)
15P139	(null)	SEC231	(null)	HYCP19_ECB	(null)	(null)	(null)	(null)	15P050	(null)
15P140	(null)	SEC231	(null)	HYCP19_ECB	(null)	(null)	(null)	(null)	15P051	(null)
15P141	(null)	SEC231	(null)	HYCP19_ECB	(null)	(null)	(null)	(null)	15P052	(null)
15P142	(null)	SEC231	(null)	HYCP19_ECB	(null)	(null)	(null)	(null)	15P053	(null)
15P143	(null)	SEC231	(null)	HYCP19_ECB	(null)	(null)	(null)	(null)	15P054	(null)
15P144	(null)	SEC231	(null)	HYCP19_ECB	(null)	(null)	(null)	(null)	15P055	(null)
15P145	(null)	SEC231	(null)	HYCP19_ECB	(null)	(null)	(null)	(null)	15P056	(null)
15P146	(null)	SEC231	(null)	HYCP19_ECB	(null)	(null)	(null)	(null)	15P057	(null)
15P147	(null)	SEC231	(null)	HYCP19_ECB	(null)	(null)	(null)	(null)	15P058	(null)
15P148	(null)	SEC231	(null)	HYCP19_ECB	(null)	(null)	(null)	(null)	15P059	(null)
15P149	(null)	SEC231	(null)	HYCP19_ECB	(null)	(null)	(null)	(null)	15P060	(null)
15P150	(null)	SEC231	(null)	HYCP19_ECB	(null)	(null)	(null)	(null)	15P061	(null)
15P151	(null)	SEC231	(null)	HYCP19_ECB	(null)	(null)	(null)	(null)	15P062	(null)
15P152	(null)	SEC231	(null)	HYCP19_ECB	(null)	(null)	(null)	(null)	15P063	(null)
15P153	(null)	SEC231	(null)	HYCP19_ECB	(null)	(null)	(null)	(null)	15P064	(null)
15P154	(null)	SEC231	(null)	HYCP19_ECB	(null)	(null)	(null)	(null)	15P065	(null)
15P155	(null)	SEC231	(null)	HYCP19_ECB	(null)	(null)	(null)	(null)	15P066	(null)
15P156	(null)	SEC231	(null)	HYCP19_ECB	(null)	(null)	(null)	(null)	15P067	(null)
15P157	(null)	SEC231	(null)	HYCP19_ECB	(null)	(null)	(null)	(null)	15P068	(null)
15P158	(null)	SEC231	(null)	HYCP19_ECB	(null)	(null)	(null)	(null)	15P069	(null)
15P159	(null)	SEC231	(null)	HYCP19_ECB	(null)	(null)	(null)	(null)	15P070	(null)
15P160	(null)	SEC231	(null)	HYCP19_ECB	(null)	(null)	(null)	(null)	15P071	(null)
15P161	(null)	SEC231	(null)	HYCP19_ECB	(null)	(null)	(null)	(null)	15P072	(null)
15P162	(null)	SEC231	(null)	HYCP19_ECB	(null)	(null)	(null)	(null)	15P073	(null)
15P163	(null)	SEC231	(null)	HYCP19_ECB	(null)	(null)	(null)	(null)	15P074	(null)
15P164	(null)	SEC231	(null)	HYCP19_ECB	(null)	(null)	(null)	(null)	15P075	(null)
15P165	(null)	SEC231	(null)	HYCP19_ECB	(null)	(null)	(null)	(null)	15P076	(null)
15P166	(null)	SEC231	(null)	HYCP19_ECB	(null)	(null)	(null)	(null)	15P077	(null)
15P167	(null)	SEC231	(null)	HYCP19_ECB	(null)	(null)	(null)	(null)	15P078	(null)
15P168	(null)	SEC231	(null)	HYCP19_ECB	(null)	(null)	(null)	(null)	15P079	(null)
15P169	(null)	SEC231	(null)	HYCP19_ECB	(null)	(null)	(null)	(null)	15P080	(null)
15P170	(null)	SEC231	(null)	HYCP19_ECB	(null)	(null)	(null)	(null)	15P081	(null)
15P171	(null)	SEC231	(null)	HYCP19_ECB	(null)	(null)	(null)	(null)	15P082	(null)
15P172	(null)	SEC231	(null)	HYCP19_ECB	(null)	(null)	(null)	(null)	15P083	(null)
15P173	(null)	SEC231	(null)	HYCP19_ECB	(null)	(null)	(null)	(null)	15P084	(null)
15P174	(null)	SEC231	(null)	HYCP19_ECB	(null)	(null)	(null)	(null)	15P085	(null)
15P175	(null)	SEC231	(null)	HYCP19_ECB	(null)	(null)	(null)	(null)	15P086	(null)
15P176	(null)	SEC231	(null)	HYCP19_ECB	(null)	(null)	(null)	(null)	15P087	(null)
15P177	(null)	SEC231	(null)	HYCP19_ECB	(null)	(null)	(null)	(null)	15P088	(null)
15P178	(null)	SEC231	(null)	HYCP19_ECB	(null)	(null)	(null)	(null)	15P089	(null)
15P179	(null)	SEC231	(null)	HYCP19_ECB	(null)	(null)	(null)	(null)	15P090	(null)
15P180	(null)	SEC231	(null)	HYCP19_ECB	(null)	(null)	(null)	(null)	15P091	(null)
15P181	(null)	SEC231	(null)	HYCP19_ECB	(null)	(null)	(null)	(null)	15P092	(null)
15P182	(null)	SEC231	(null)	HYCP19_ECB	(null)	(null)	(null)	(null)	15P093	(null)
15P183	(null)	SEC231	(null)	HYCP19_ECB	(null)	(null)	(null)	(null)	15P094	(null)
15P184	(null)	SEC231	(null)	HYCP19_ECB	(null)	(null)	(null)	(null)	15P095	(null)
15P185	(null)	SEC231	(null)	HYCP19_ECB	(null)	(null)	(null)	(null)	15P096	(null)
15P186	(null)	SEC231	(null)	HYCP19_ECB	(null)	(null)	(null)	(null)	15P097	(null)
15P187	(null)	SEC231	(null)	HYCP19_ECB	(null)	(null)	(null)	(null)	15P098	(null)
15P188	(null)	SEC231	(null)	HYCP19_ECB	(null)	(null)	(null)	(null)	15P099	(null)
15P189	(null)	SEC231	(null)	HYCP19_ECB	(null)	(null)	(null)	(null)	15P100	(null)
15P190	(null)	SEC231	(null)	HYCP19_ECB	(null)	(null)	(null)	(null)	15P101	(null)
15P191	(null)	SEC231	(null)	HYCP19_ECB	(null)	(null)	(null)	(null)	15P102	(null)
15P192	(null)	SEC231	(null)	HYCP19_ECB	(null)	(null)	(null)	(null)	15P103	(null)
15P193	(null)	SEC231	(null)	HYCP19_ECB	(null)	(null)	(null)	(null)	15P104	(null)
15P194	(null)	SEC231	(null)	HYCP19_ECB	(null)	(null)	(null)	(null)	15P105	(null)
15P195	(null)	SEC231	(null)	HYCP19_ECB	(null)	(null)	(null)	(null)	15P106	(null)
15P196	(null)	SEC231	(null)	HYCP19_ECB	(null)	(null)	(null)	(null)	15P107	(null)
15P197	(null)	SEC231	(null)	HYCP19_ECB	(null)	(null)	(null)	(null)	15P108	(null)
15P198	(null)	SEC231	(null)	HYCP19_ECB	(null)	(null)	(null)	(null)	15P109	(null)
15P199	(null)	SEC231	(null)	HYCP19_ECB	(null)	(null)	(null)	(null)	15P110	(null)
15P200	(null)	SEC231	(null)	HYCP19_ECB	(null)	(null)	(null)	(null)	15P111	(null)
15P201	(null)	SEC231	(null)	HYCP19_ECB	(null)	(null)	(null)	(null)	15P112	(null)
15P202	(null)	SEC231	(null)	HYCP19_ECB	(null)	(null)	(null)	(null)	15P113	(null)
15P203	(null)	SEC231	(null)	HYCP19_ECB	(null)	(null)	(null)	(null)	15P114	(null)
15P204	(null)	SEC231	(null)	HYCP19_ECB	(null)	(null)	(null)	(null)	15P115	(null)
15P205	(null)	SEC231	(null)	HYCP19_ECB	(null)	(null)	(null)	(null)	15P116	(null)
15P206	(null)	SEC231	(null)	HYCP19_ECB	(null)	(null)	(null)	(null)	15P117	(null)
15P207	(null)	SEC231	(null)	HYCP19_ECB	(null)	(null)	(null)	(null)	15P118	(null)
15P208	(null)	SEC231	(null)	HYCP19_ECB	(null)	(null)	(null)	(null)	15P119	(null)
15P209	(null)	SEC231	(null)	HYCP19_ECB	(null)	(null)	(null)	(null)	15P120	(null)
15P210	(null)	SEC231	(null)	HYCP19_ECB	(null)	(null)	(null)	(null)	15P121	(null)
15P211	(null)	SEC231	(null)	HYCP19_ECB	(null)	(null)	(null)	(null)	15P122	(null)
15P212	(null)	SEC231	(null)	HYCP19_ECB	(null)	(null)	(null)	(null)	15P123	(null)
15P213	(null)	SEC231	(null)	HYCP19_ECB	(null)	(null)	(null)	(null)	15P124	(null)
15P214	(null)	SEC231	(null)	HYCP19_ECB	(null)	(null)	(null)	(null)	15P125	(null)
15P215	(null)	SEC231	(null)	HYCP19_ECB	(null)	(null)	(null)	(null)	15P126	(null)
15P216	(null)	SEC231	(null)	HYCP19_ECB	(null)	(null)	(null)	(null)	15P127	(null)
15P217	(null)	SEC231	(null)	HYCP19_ECB	(null)	(null)	(null)	(null)	15P128	(null)
15P218	(null)	SEC231	(null)	HYCP19_ECB	(null)	(null)	(null)	(null)	15P129	(null)
15P219	(null)	SEC231	(null)	HYCP19_ECB	(null)	(null)	(null)	(null)	15P130	(null)
15P220	(null)	SEC231	(null)	HYCP19_ECB	(null)	(null)	(null)	(null)	15P131	(null)
15P221	(null)	SEC231	(null)	HYCP19_ECB	(null)	(null)	(null)	(null)	15P132	(null)
15P222	(null)	SEC231	(null)	HYCP19_ECB	(null)	(null)	(null)	(null)	15P133	(null)
15P223	(null)	SEC231	(null)	HYCP19_ECB	(null)	(null)	(null)	(null)	15P134	(null)
15P224	(null)	SEC231	(null)	HYCP19_ECB	(null)	(null)	(null)	(null)	15P135	(null)
15P225	(null)	SEC231	(null)	HYCP19_ECB	(null)	(null)	(null)	(null)	15P136	(null)
15P226	(null)	SEC231	(null)	HYCP19_ECB	(null)	(null)	(null)	(null)	15P137	(null)
15P227	(null)	SEC231	(null)	HYCP19_ECB	(null)	(null)	(null)	(null)	15P138	(null)
15P228	(null)	SEC231	(null)	HYCP19_ECB	(null)	(null)	(null)	(null)	15P139	(null)
15P229	(null)	SEC231	(null)	HYCP19_ECB	(null)	(null)	(null)	(null)	15P140	(null)
15P230	(null)	SEC231	(null)	HYCP19_ECB	(null)	(null)	(null)	(null)	15P141	(null)
15P231	(null)	SEC231	(null)	HYCP19_ECB	(null)	(null)	(null)	(null)	15P142	(null)
15P232	(null)	SEC231	(null)	HYCP19_ECB	(null)	(null)	(null)	(null)	15P143	(null)
15P233	(null)	SEC231	(null)	HYCP19_ECB	(null)	(null)	(null)	(null)	15P144	(null)
15P234	(null)	SEC231	(null)	HYCP19_ECB	(null)	(null)	(null)	(null)	15P145	(null)
15P235	(null)	SEC231	(null)	HYCP19_ECB	(null)	(null)	(null)	(null)	15P1	

Control Strategy Deployment

After a strategy is correctly assigned to a compound and the compound to a controller, it can be deployed using commands selected from the object in the Deployment View, or one of the other Control Editors' Application Views.

The targets updated in the deployment include:

- Compounds and blocks are downloaded to the Foxboro DCS, including the assigned controller and the Compound Summary Access (CSA).
- Security access settings for compound and block attributes are loaded into Archestra Security.
- Archestra History is updated with the collection points configured in the compounds and blocks.

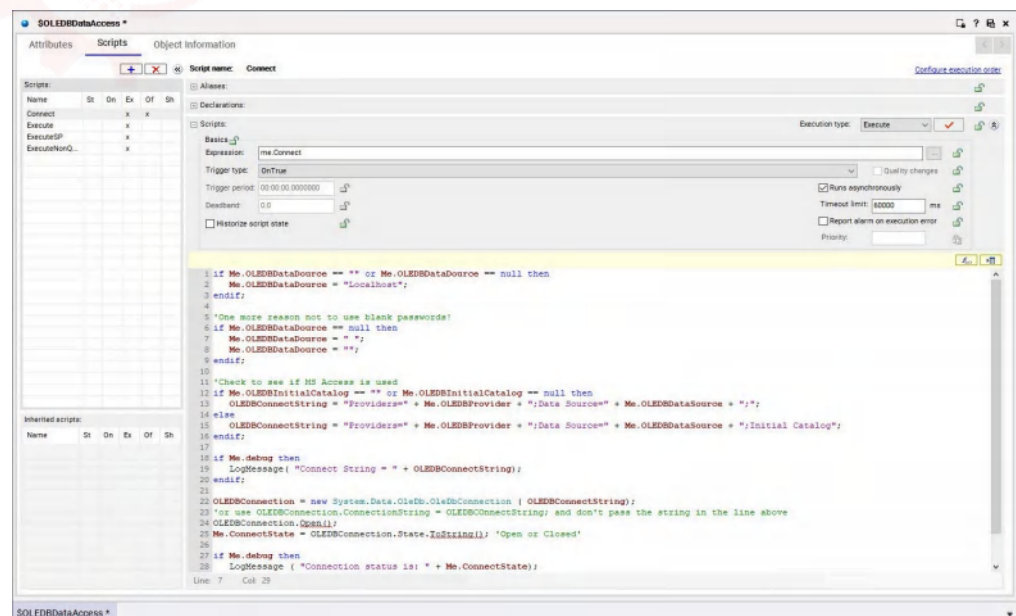
When a strategy or compound is later modified using the Control Editors, it needs to be re-deployed to implement the changes in the runtime system. When a strategy or compound is re-deployed, only the affected targets are updated, and only the modified parameters are downloaded.

Concurrent Access to the Database

The Control Editors support multiple clients concurrently accessing the database via Remote Desktop Services. Networked clients execute their application independently from the server and only communicate when a client session is opened or closed. Remote Desktop Services use the resources of the server to perform their operations and remote clients to provide a user interface. These utilize different resources within the network architecture and can be used in combination to achieve optimal performance.

User Defined Application Objects

The Control Editors enable the user to construct application objects and deploy them to the Foxboro DCS Control Software Application Environments hosted by Archestra Industrial Application Servers. These are created by the Galaxy Repository. This image depicts an OLEDB database application created as an application object.



Access Security

The Control Editors use an ArchastrA role-based security model where users subscribe to different roles depending upon their job requirements. Roles have associated access permissions and security groups. Security groups have various plant areas assigned to them.

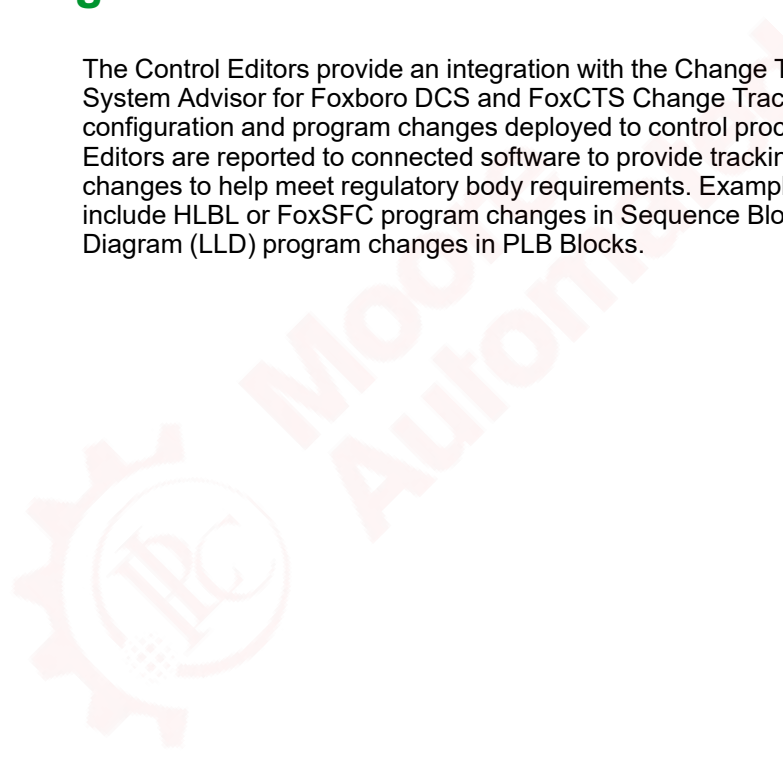
A user's subscription to a particular role provides access to specific security groups (plant areas) with specified access permissions (for example, Operate and Secured Write) in those groups.

The authentication process is `user_name` and `password`.

The security model can be locally based or tied to the operating system of the hosting computer or to a Microsoft Active Directory® setup (recommended). If Microsoft Active Directory is used, you must have at least two redundant domain controllers.

Change Tracking

The Control Editors provide an integration with the Change Tracking feature of System Advisor for Foxboro DCS and FoxCTS Change Tracking software. All control configuration and program changes deployed to control processors from the Control Editors are reported to connected software to provide tracking of control system changes to help meet regulatory body requirements. Examples of program changes include HLBL or FoxSFC program changes in Sequence Blocks or Ladder Logic Diagram (LLD) program changes in PLB Blocks.



Hardware and Software Specifications

Recommended Sizing Requirements

Table 1 - Minimum Sizing Requirements for All Machine Types

Device/Role	RAM	Hard Drive
Remote Desktop Services	16 GB minimum. 32 GB recommended.	150 GB Minimum (a)
Control Software Galaxy	16 GB minimum. 32 GB recommended.	250 GB Minimum
Control Software Historian	16 GB minimum. 32 GB recommended.	500 GB Minimum
All other roles	16 GB minimum. 32 GB recommended.	150 GB Minimum
<p>(a) For the Control HMI based remote desktop services VM:</p> <ul style="list-style-type: none">With the increase of managed applications and more data on remote desktop servers, there is a need to increase the size of the C : partitions. For each remote desktop user, 3 GB of space is required for managed applications on the C : drive partition. For more information on how to configure/extend a drive, see <i>EcoStruxure™ Foxboro™ DCS Control Software Deployment Guide</i> (B0750BA).When configuring virtualization host servers, you must take into account the requirements for all individual virtual machines that will run on the virtualization host server.		

Control Editors Server and Client Specifications

Operating System	Windows Server IoT 2022 or Microsoft Windows 10 IoT Enterprise LTSC 2021 64-bit Edition
Computer Hardware	Foxboro DCS-qualified computer hardware (for example, D96, H90, H92, H94, V91, or V95)
Communications Network	100 Mbps TCP/IP Switched Ethernet

Moore Automated: Your Strategic Partner for Industrial Spares and Solutions

Moore Automated - Global Supplier Of Industrial Automation Parts

- Expert Consultancy: Technical sales specialists with 10+ years of industry expertise
- 24/7 Responsive Support: AI-powered customer service and engineer hotline
- Quality Commitment: 12-month global warranty on all products
- Supply Chain Assurance: Million-level SKU inventory for industrial spare parts
- Worldwide Delivery: DDP (Delivered Duty Paid) logistics solutions covering 150+ countries



**Moore
Automated**

www.mooreautomated.com

Email: miya@mvme.cn | WhatsApp: 86 - 180 2077 6792