

# 1. Power Cable Type TC-001

This type of Power Cable is used to connect 24 Vdc from a Power Distribution Unit MCB (T8292) to a Trusted Controller or Expander Chassis, as shown in Figure 1 below.

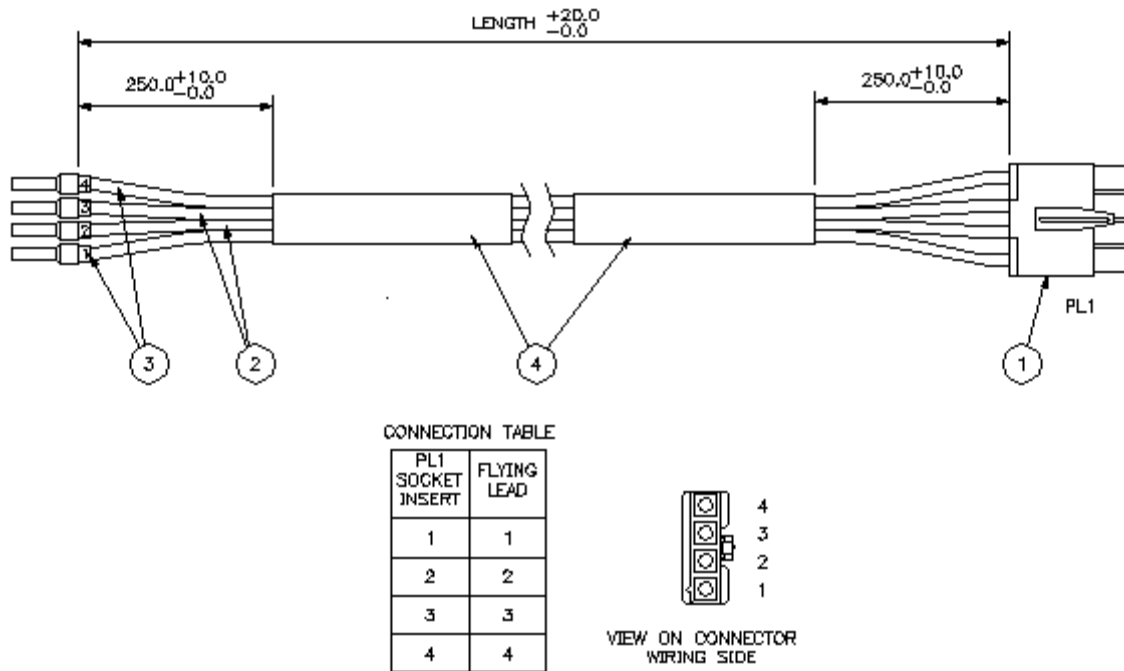


Figure 1 Power Cable Type TC-001

The part numbers for the cable are detailed in Table 2 below. Non-standard lengths are available in increments of 0.5 m.

Part Number	Length	Description
TC-001-02-1m5	1.5 m	Chassis Power Cable (MCB Distribution Unit to Controller or first Expander Chassis)
TC-001-02-2m5	2.5 m	Chassis Power Cable (MCB Distribution Unit to second, or third Expander Chassis)
TC-001-02-6m0	6.0 m	Chassis Power Cable (MCB Distribution Unit to Expander Chassis in an adjacent bay)
TC-001-03-1m5	1.5 m	Chassis Power Cable (UL) (MCB Distribution Unit to Controller or first Expander Chassis)

---

TC-001-03-2m5	2.5 m	Chassis Power Cable (UL) (MCB Distribution Unit to second, or third Expander Chassis)
TC-001-03-6m0	6.0 m	Chassis Power Cable (UL) (MCB Distribution Unit to Expander Chassis in an adjacent bay)

**Table 2 Power Cable Type TC-001 Part Numbers**