

Trusted TC000 Power Cables

Product Overview

This document provides detailed information for Trusted® 24 Vdc Power Cables that are currently available. These are listed in Table 1 below.

Cable Type	Description
TC-001-02, TC-001-03	Chassis Power Cable To connect from a Power Distribution Unit Miniature Circuit Breaker (MCB) (T8292) to Trusted Controller or Expander Chassis
TC-002-02, TC-002-03	Power Cable To connect from a power distribution unit MCB (T8292) to Power Distribution Module 15-Way Fused (T8293)
TC-003-02, TC-003-03	Power Cable To connect from a Power Distribution Module 15-Way Fused (T8293) to Input Field Termination Assembly (FTA)
TC-004-02, TC-004-03	Power Cable To connect from a Power Distribution Module 15-Way Fused (T8293) to Input Versatile Field Termination Assembly (VFTA)
TC-006-02, TC-006-03	SmartSlot Link Cable To interconnect expanders in a system using SmartSlot
TC-011-02, TC-011-03	Fan Power Cable To connect from a Power Distribution Unit MCB (T8292) to Fan Assembly (T8270)

Table 1 Trusted 24 Vdc Power Cables

The -02 / -03 suffix of the cable part number dictates the properties of the cable:

- 02 suffix cables, or those with no suffix, are cables which are halogen free, i.e. low smoke zero halogen, flame retardant to IEC 60332-3 Cat A.
- 03 suffix cables are UL Certified.

Both cables are manufactured using sufficient cross-sectional area to meet the power consumption requirements of a Trusted System.

1. Power Cable Type TC-001

This type of Power Cable is used to connect 24 Vdc from a Power Distribution Unit MCB (T8292) to a Trusted Controller or Expander Chassis, as shown in Figure 1 below.

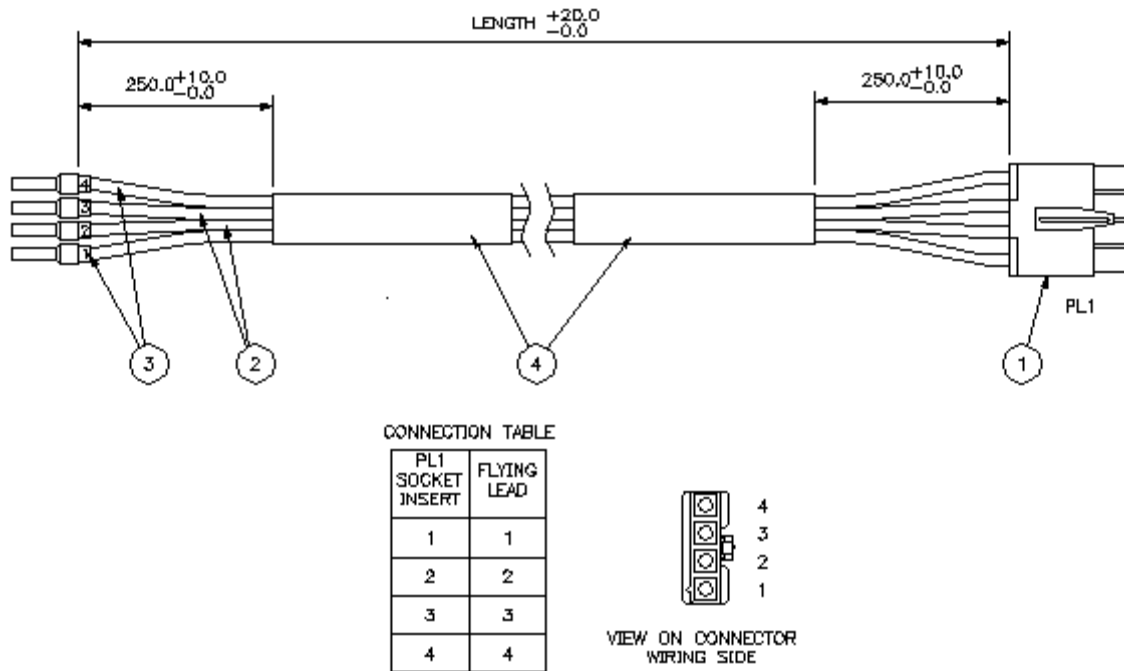


Figure 1 Power Cable Type TC-001

The part numbers for the cable are detailed in Table 2 below. Non-standard lengths are available in increments of 0.5 m.

Part Number	Length	Description
TC-001-02-1m5	1.5 m	Chassis Power Cable (MCB Distribution Unit to Controller or first Expander Chassis)
TC-001-02-2m5	2.5 m	Chassis Power Cable (MCB Distribution Unit to second, or third Expander Chassis)
TC-001-02-6m0	6.0 m	Chassis Power Cable (MCB Distribution Unit to Expander Chassis in an adjacent bay)
TC-001-03-1m5	1.5 m	Chassis Power Cable (UL) (MCB Distribution Unit to Controller or first Expander Chassis)

TC-001-03-2m5	2.5 m	Chassis Power Cable (UL) (MCB Distribution Unit to second, or third Expander Chassis)
TC-001-03-6m0	6.0 m	Chassis Power Cable (UL) (MCB Distribution Unit to Expander Chassis in an adjacent bay)

Table 2 Power Cable Type TC-001 Part Numbers